



REPLY TO  
ATTENTION OF

DEPARTMENT OF THE ARMY  
U.S. ARMY ENGINEER DISTRICT, SACRAMENTO  
CORPS OF ENGINEERS  
1325 J STREET  
SACRAMENTO, CALIFORNIA 95814-2922

September 5, 2006

EI-2522  
VJR

Regulatory Branch (200500838)

Ed Stoner  
Western Cultural Resource Management, Inc.  
50 Freeport Blvd, Ste 15  
Sparks, Nevada 89431-6254

Dear Mr. Stoner:

The Nevada State Historic Properties Office contacted this office to verify the area of potential effect (APE) of the cultural resources survey report you completed for the Union Pacific bridge replacement project. The report, *A Historic Railroad Bridge at Milepost 267.33 of the Union Pacific Mainline (Nevada Subdivision), Washoe County, Nevada*, did not identify the APE. The Corps is responsible for assuring that the APE for this historic property is adequately defined for the bridge located in Section 21, Township 20 North, Range 23 East, Mount Diablo Base and Meridian, Washoe County, Nevada.

Maps showing the project location and a small-scale map showing the APE (see Sheet 3 of 3) are enclosed. It is believed this APE boundary would include all areas that could potentially be disturbed and would include any construction and staging areas.

Please confirm whether your report surveyed the area highlighted in yellow with a red outline depicted on the enclosed Sheet 3 of 3. If your report did not survey this area, please survey any area within this APE and submit a report amendment. If the construction or staging area or any other bridge replacement project-associated activities are outside this APE, please submit a small-scale map depicting the APE you surveyed. Please note that a scale and north arrow on Sheet 3 of 3 is missing, however this information can easily be deciphered from Sheet 2 of 3 of the enclosure.

Please refer to Corps number 200500838 in any correspondence related this project. If you have any questions, please contact Richard Gebhart, Reno Regulatory Office, 300 Booth Street, Room 2103, Reno, Nevada 89509-1361; email: *richard.a.gebhart@usace.army.mil*; or telephone 775-784-5307. You may also use our website: *www.spk.usace.army.mil/regulatory.html*.

Sincerely,

Richard Gebhart  
Chief, Reno Regulatory Office

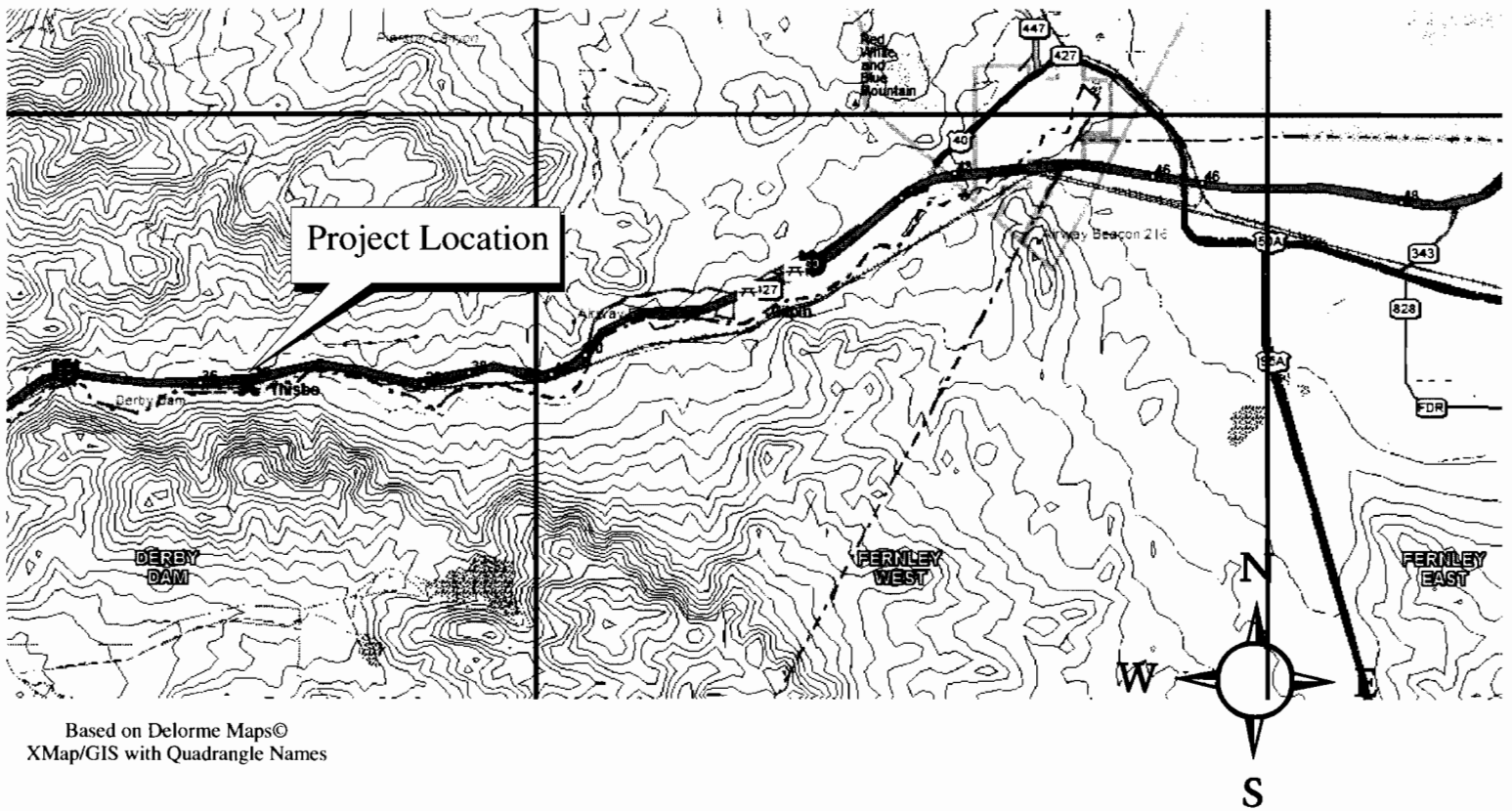
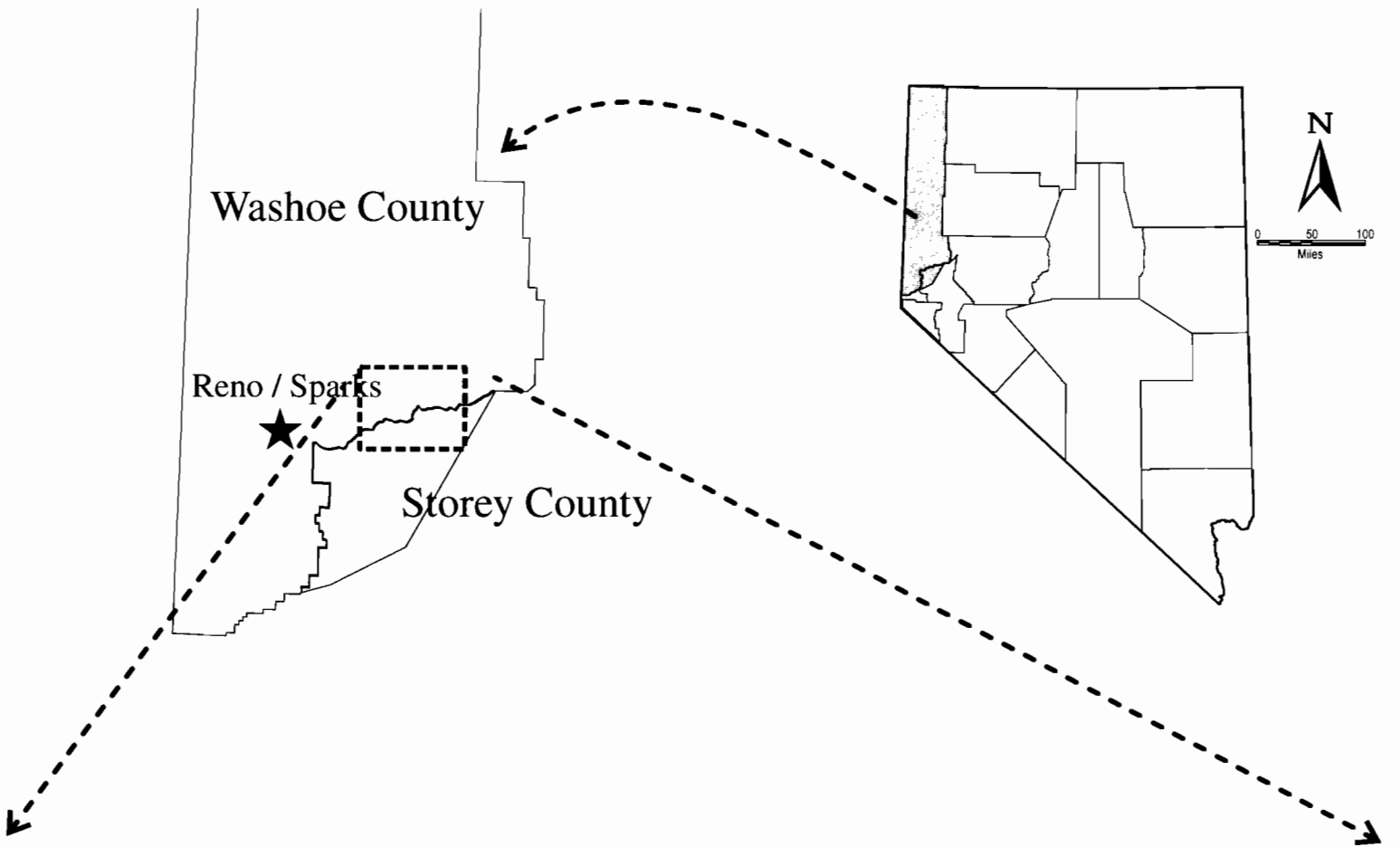
Enclosure

Copy Furnished Enclosure:

Rebecca Ossa, Nevada State Historical Preservation Office, Capitol Complex, 100 Stewart St,  
Carson City NV 89701-4285

Mike Martin, Merrick & Company, 2450 S Peoria St, Aurora CO 80014-5472

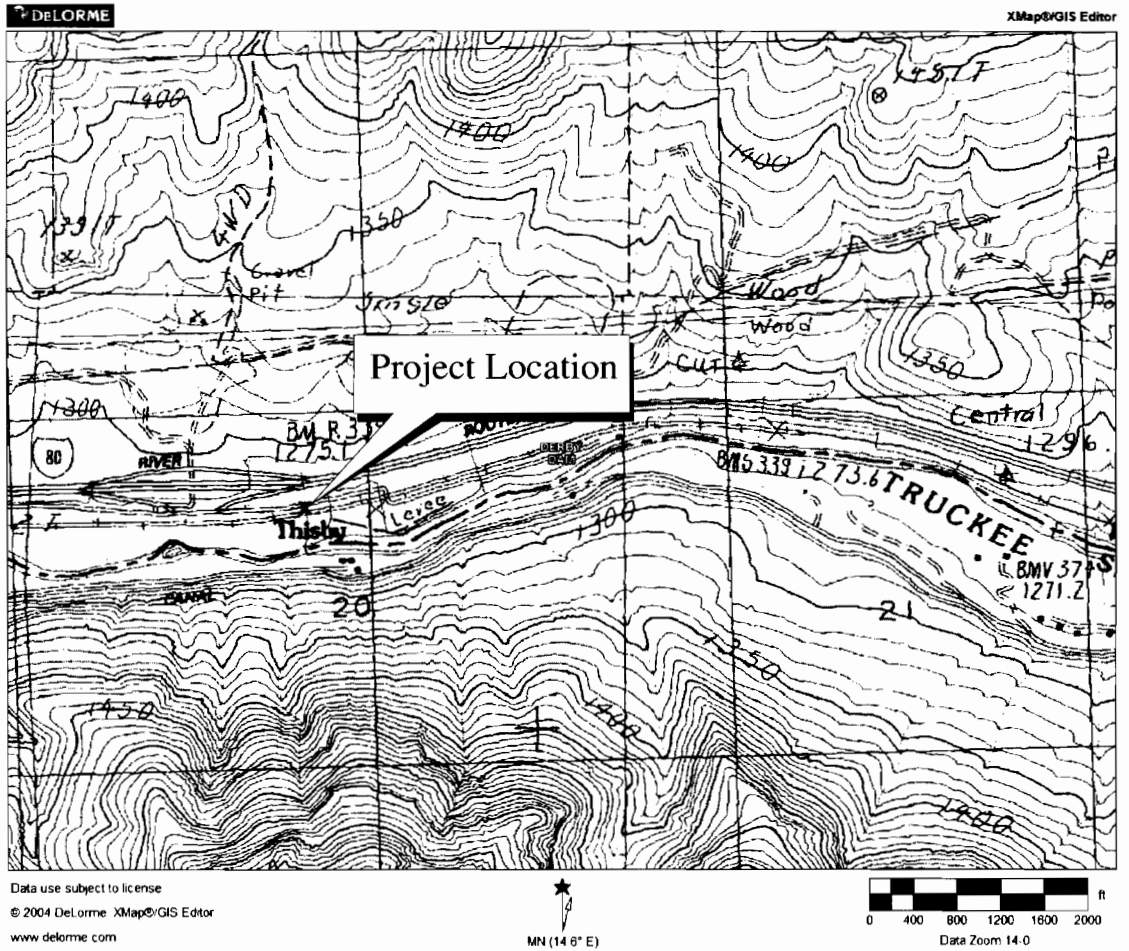
✓ Victoria Rutson, Surface Transportation Board, Section of Environmental Analysis, 1925 K  
Street NW Room 504, Washington DC 20423-0001



Based on Delorme Maps©  
 XMap/GIS with Quadrangle Names

### Project Vicinity Maps

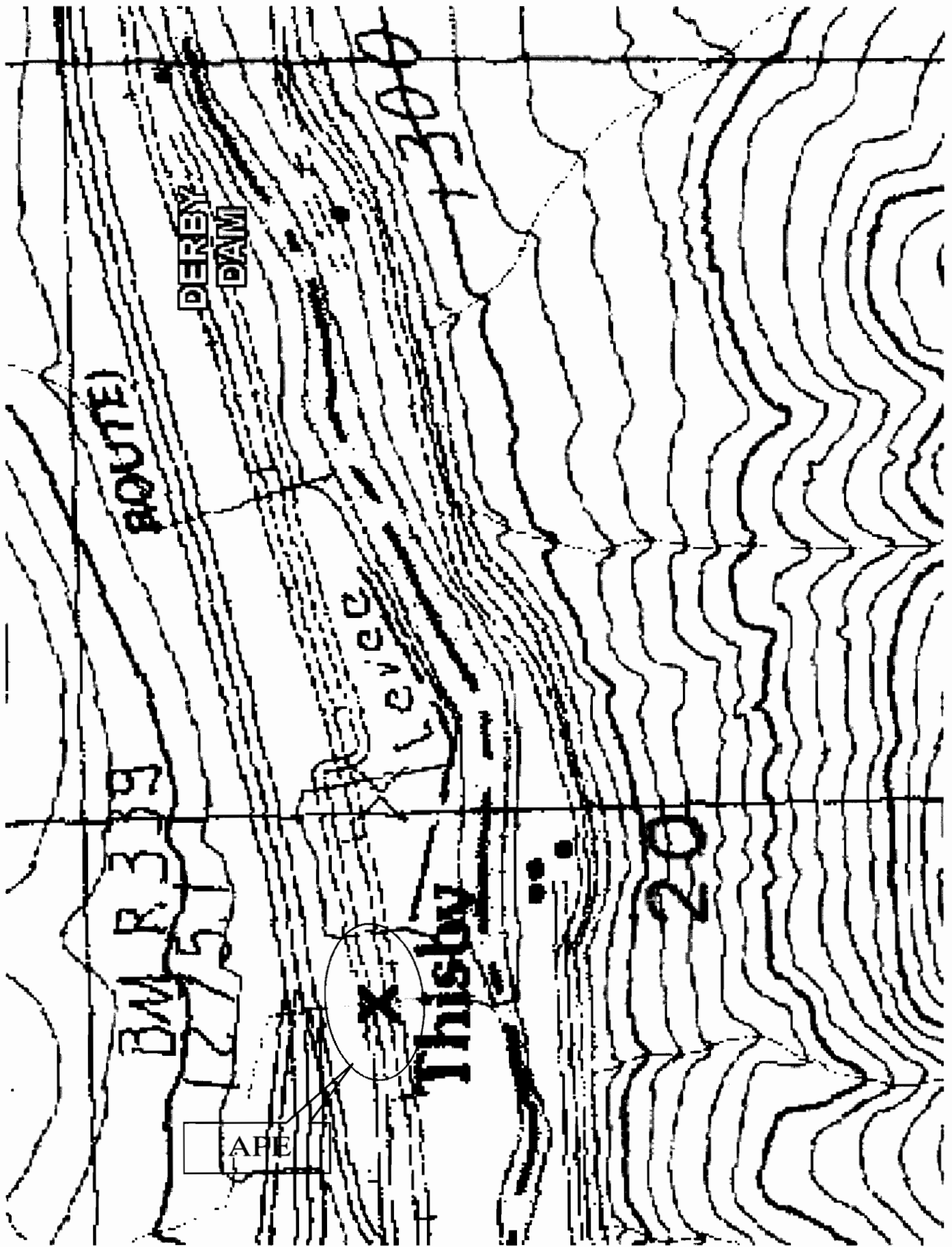
Union Pacific Railroad  
 Unnamed Waterway  
 August 2006  
 Corps Number: 200500838  
 Sheet 1 of 3 of Enclosure



Based on Delorme Maps©  
XMap/GIS with Quadrangle Names  
and USGS July 2000 DOQQ Aerial

Union Pacific Railroad  
Unnamed Waterway  
August 2006  
Corps Number: 200500838  
Sheet 2 of 2 of Enclosure

# Project Location Maps



Project Location Map  
Showing Area of Potential Effect (APE)