

130500

R-6

ANNUAL REPORT 1977 CLASS 1

1 of 1

BURLINGTON NORTHERN INC.

130500

Ø

**R-6**

APPROVED BY GAO  
B-180230 (R0457)  
Expires 7-31-80

# annual report

of railroad branch lines

INTERSTATE  
COMMERCE COMMISSION  
RECEIVED

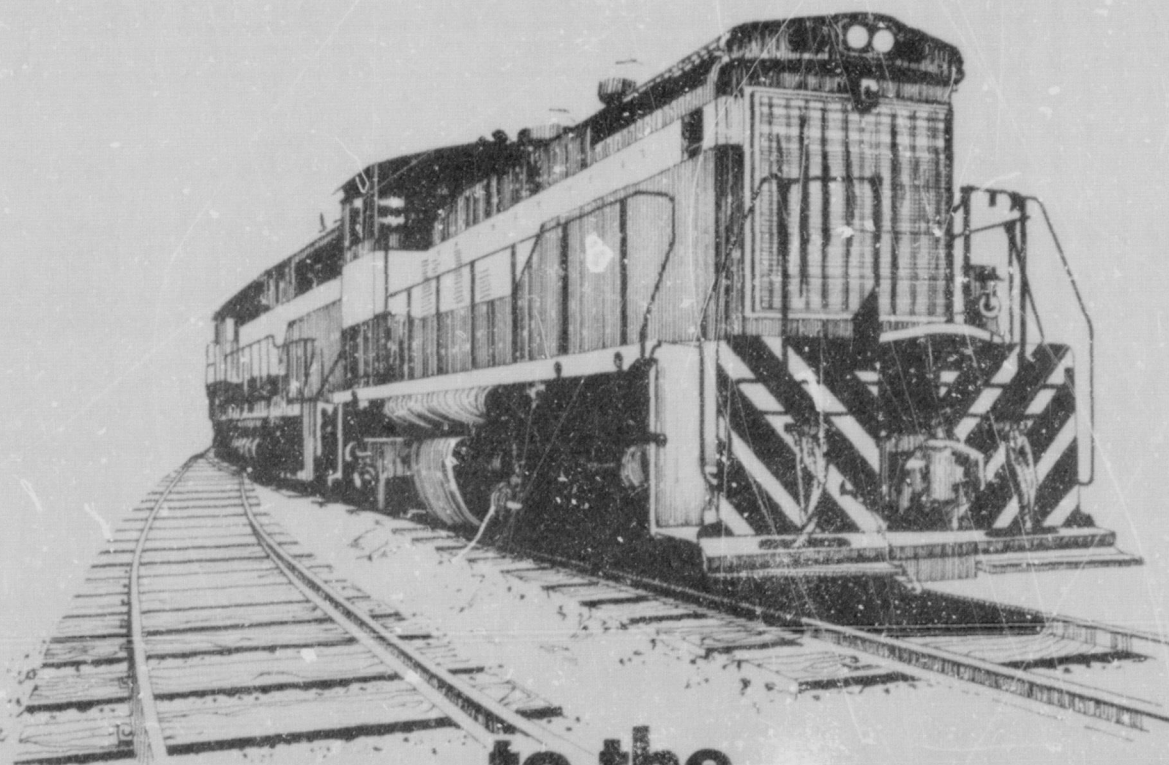
JUL 5 1978

ADMINISTRATIVE

MAIL

Full Name and Address of Reporting Carrier:

BURLINGTON NORTHERN INC.  
176 EAST FIFTH STREET  
ST. PAUL, MINNESOTA 55101



to the  
**Interstate Commerce Commission**  
for the year ended December 31, 1977

## GENERAL INSTRUCTIONS

1. Under order of the Commission, railroads are required to file on or before June 30 of each year a report listing account by account totals of aggregate revenue, cost and service unit data for all branch lines for which it must maintain a system of accounts. Only such data as is required by Parts 1121 or 1125 must be reported.

2. The data shall be accumulated for the prior calendar year or portion thereof and reported in the format set forth in account 940. On-branch cost shall be separated into labor, materials, and other.

3. Separate reports for each branch line are not required; however, the railroad must list and describe each branch line using the format set forth in 49 CFR 1121.21. (Copies of this format are enclosed for carrier's use.)

4. Reports should be filled out in triplicate and the original and one copy should be returned to the Interstate Commerce Commission, Bureau of Accounts, Washington, D. C. 20423. The other copy should be retained in respondents' files. Figures should be reported in whole dollars.

Copies of the report shall be filed with and made available for public inspection at the Commission's field offices in the state or states in which the branch line is situated. Addresses of field offices enclosed.

5. Records, accounts, working papers, and other documents reflecting the revenue, cost and service unit data for each branch line for which the railroad must maintain data shall be made available for inspection and examination by the Commission and for lines situated within its state, by the designated state agency at a time and place mutually agreeable to the parties. The railroad shall also reproduce such records for the designated state agency, provided the agency pays the reasonable cost thereof.





**BURLINGTON NORTHERN**

COSTS AND STATISTICS DIVISION  
FINANCE DEPARTMENT

176 East Fifth Street  
St. Paul, Minnesota 55101  
Telephone (612) 298-2121

INTERSTATE  
COMMERCE COMMISSION  
RECEIVED

June 29, 1978

JUL 3 1978

ADMINISTRATIVE SERVICES

Mr. James H. Bayne, Chief  
Section of Reports  
Bureau of Accounts  
Interstate Commerce Commission  
Washington, D. C. 20423

Dear Mr. Bayne:

In addition to Burlington Northern the Bureau of Accounts forwarded blank R-6 Annual Report of Branch Lines forms to be completed for the following railroad companies:

Duluth Union Depot & Transfer Company  
Keokuk Union Depot Company  
Oregon Electric Railway Company  
Oregon Trunk Railway Company  
Paducah & Illinois Railroad Company  
Walla Walla Valley Railway Company  
Winona Bridge Railway Company

Of the carriers listed only the Oregon Electric Railway Company has trackage proposed for abandonment. However, no separate R-6 has been prepared since all data applicable to O.E. has been included and identified in Burlington Northern's R-6 Report which covers system operations. Likewise, no R-6 Report is required for the other carriers since none of their trackage has been designated in Categories 1-4.

Yours truly,

L. L. Van Zinderen  
Assistant Vice President

File: 9-2-E

RET/mkp



BURLINGTON NORTHERN INC.

Annual Report of Railroad Branch Lines  
Year 1977 Form R-6

Designation and Description of Branch Lines

Category 1 Lines

- Line Segment No. 1 - Lass (MP 55.60) to Garden Plain (MP 59.63), Whiteside County, Illinois - Stations: Garden Plain - 59.63.
- Line Segment No. 2 - Aledo (MP 38.40) to Joy (MP 45.18), Mercer County, Illinois - Stations: Joy - 44.54.
- Line Segment No. 3 - Bushnell (MP 161.10) to Roseville (MP 176.97), McDonough and Warren Counties, Illinois - Stations: Walnut Grove - 165.9; Swan Creek - 172.1; Roseville - 176.85.
- Line Segment No. 4 - Vermont (MP 94.34) to Rushville (MP 109.69), Schuyler and Fulton Counties, Illinois - Stations: Rushville - 109.48.
- Line Segment No. 5 - Bradford (MP 10.00) to Buda (MP 0.32), Stark and Bureau Counties, Illinois - Stations: Lombardville - 7.1; Burnett - 3.2; Buda - 0.00.
- Line Segment No. 6 - Vermont (MP 140.13) to Astoria (MP 133.02), Fulton County, Illinois - Stations: Astoria Branch Jct. - 140.13; Amax Coal Co. Sun Spot Mine - 139.5; Astoria - 133.4.
- Line Segment No. 7 - Earlville (MP 7.21) to Baker (MP 13.72), LaSalle County, Illinois - Stations: Baker - 13.72.
- Line Segment No. 8 - East Quincy (MP 267.28) to Hulls (MP 279.90), Adams and Pike Counties, Illinois - Stations: Marblehead - 269.44; East Hannibal - 250.00; Hulls via Trackage Rights - 7.0.
- Line Segment No. 9 - Quincy (MP 70.30) to Mendon (MP 55.77), Adams County, Illinois - Stations: Rock Creek - 64.1; Ursa - 61.2; Mendon - 56.1.
- Line Segment No. 10 - Alpha (MP 18.52) to Woodhull (MP 14.36), Henry County, Illinois - Stations: Woodhull - 14.62.



### Category 1 Lines

- Line Segment No. 11 - E. Alton (MP 26.63) to Whitehall (MP 72.70), Greene, Macoupin, Madison and Jersey Counties, Illinois - Stations: Wrights - 65.45; Greenfield - 60.64; Rockbridge - 55.53; Medora - 47.95; Piasa - 43.6; Brighton - 38.49; Alton Hospital - 28.28.
- Line Segment No. 12 - Moose Lake (MP 109.00) to Carlton (MP 129.49) Carlton County, Minn. - Stations: Barnum - 112.5; Mahtowa - 118.5; Otter Creek - 124.2.
- Line Segment No. 13 - French (MP 56.5) to Breckenridge (MP 74.0), Ottertail and Wilkin Counties, Minn. - Stations: Foxhome - 61.27; Everdeli - 66.0.
- Line Segment No. 14 - Elk River (MP 2.50) to Princeton (MP 18.78), Sherburne and Mille Lacs Counties, Minnesota - Stations: Zimmermann - 9.5; Princeton - 18.8.
- Line Segment No. 15 - Fergus Falls W. Jct. (MP 0.50) to Pelican Rapids (MP 21.37) Ottertail County, Minn. - Stations: Erhard - 15.4; Pelican Rapids - 21.37.
- Line Segment No. 16 - Barnesville (MP 5.0) to Downer (MP 9.09); Clay County, Minn. - Stations: Downer - 9.09.
- Line Segment No. 17 - Starbuck (MP 67.50) to Villard (MP 51.61), Pope County, Minnesota - Stations: Villard - 52.0; Glenwood - 58.91.
- Line Segment No. 18 - White Bear Lake (MP 0.00) to Duluth Jct. (MP 6.37), Ramsey and Washington Counties, Minnesota - Stations: Mahtomedi - 3.54.
- Line Segment No. 19 - Battle Lake (MP 31.42) to Henning (MP 15.89), Ottertail County, Minn. - Stations: Vining - 22.2; Clitheral - 28.8; Henning 16.09.
- Line Segment No. 20 - Jamestown (MP 39.67) to Klose (MP 33.75), Stutsman County, North Dakota - Stations: None.
- Line Segment No. 21 - Oakes (MP 149.5) to Forbes (MP 63.0), Dickey County, North Dakota - Stations: Guelph - 34.66; Ellendale - 49.17; Forbes - 62.51.
- Line Segment No. 22 - York (MP 0.00) to Dunseith (MP 41.8), Benson, Pierce, and Rolette Counties, North Dakota - Stations: Wolford - 14.01; Rolette - 27.76; Thorne - 33.80; Dunseith - 41.80.

### Category 1 Lines

- Line Segment No. 23 - Joliet (MP 179.13) to Pembina (MP 191.71),  
Pembina County, North Dakota - Stations: McArthur - 82.5; Pembina -  
189.49.
- Line Segment No. 24 - Crete (MP 142.00) to Oakes (MP 149.50), Sargent  
and Dickey Counties, North Dakota - Stations: None.
- Line Segment No. 25 - Hill City (MP 0.00) to Keystone (MP 8.75),  
Pennington County, South Dakota - Stations: Oblivion - 4.24;  
Keystone - 8.85.
- Line Segment No. 26 - Sioux Falls (MP 2.8) to Hayti (MP 85.26), Minnehaha,  
Lake, Brookings, Kingsbury and Hamlin Counties, South Dakota - Stations:  
Crooks - 9.15; Lyons - 14.8; Colton - 20.61; Chester - 28.19; Wentworth -  
35.80; Rutland - 42.1; Nunda - 47.79; Sinai - 53.80; Arlington - 63.47;  
Badger - 73.03; Lake Norden - 79.67; Hayti - 85.26.
- Line Segment No. 27 - Sioux Falls (MP 150.68) to Yankton (MP 208.80),  
Minnehaha, Lincoln, Turner, and Yankton Counties, South Dakota -  
Stations: Tea - 156.55; Lennox - 163.32; Davis - 171.95; Viborg -  
179.35; Irene - 186.74; Volin - 196.95; Mission Hill - 201.7; Yankton -  
203.80.
- Line Segment No. 28 - Silesia (MP 9.65) to Red Lodge,  
(MP 44.17), Carbon County, Montana - Stations: Rockvale - 12.08;  
Montaque - 14.30; Joliet - 17.70; Boyd - 23.03; Roberts - 31.62;  
Fox - 37.55; Carbon Mine Spur - 43.60; Red Lodge - 44.24.
- Line Segment No. 29 - Moccasin (MP 0.00) to Lewistown (MP 30.68),  
Judith Basin and Fergus Counties, Montana - Stations: Kolin - 7.32;  
Rossfork - 14.1; Kingston - 20.19; Spring Creek Jct. - 21.38;  
Hanover - 70.2; Lewistown Jct. - 62.2; Lewistown - 61.9.
- Line Segment No. 30 - Haugan (MP 19.57) Mineral County, Montana to  
Wallace (MP 58.61) Shoshone County, Idaho - Stations: Haugan - 19.15;  
Saltese - 24.40; Borax - 33.35; Sahon - 36.90; Lookout - 38.42;  
State Line - 38.45; Dorsey - 42.1; Carbonite - 43.50; Lucky Friday - 49.5;  
Mullan - 50.19; Morning - 51.15; Golconda - 54.3; Wallace - 58.61.
- Line Segment No. 31 - Saco (MP 0.10) to Hogeland (MP 77.40), Phillips and  
Blaine Counties, Montana - Stations: Hogeland Jct. - 0.10; Cole - 6.87;  
Taitnall - 13.41; Whitewater - 24.01; Loring - 36.95; Chapman - 52.26;  
Turner - 65.27; Hogeland - 77.40.
- Line Segment No. 32 - Edgar (MP 27.59) to Nelson (MP 14.01), Clay and  
Nuckolls Counties, Nebraska - Stations: Nelson - 14.01.



### Category 1 Lines

- Line Segment No. 33 - Cooper Spur (MP 26.5) to Shubert (MP 11.23), Nemaha and Richardson Counties, Nebraska - Stations: Nemaha - 28.45; Shubert - 11.49.
- Line Segment No. 34 - Ashland (MP 19.00) to Prague (MP 31.42), Saunders County, Nebraska - Stations: Memphis - 6.04; Ithaca - 13.14; Wahoo - 18.91; Malmo - 25.58; Prague - 31.40.
- Line Segment No. 35 - Pappio (MP 4.00) to Gilmore Jct. (MP 8.41), Sarpy County, Nebraska - Stations: Fort Crook - 6.53.
- Line Segment No. 36 - Villisca (MP 52.82) to Clarinda (MP 67.80), Page and Montgomery Counties, Iowa - Stations: Hepburn - 60.45; Clarinda - 52.82.
- Line Segment No. 37 - Creston (MP 0.00), Adams, Union and Taylor Counties, Iowa to Maryville (MP 59.50), Nodaway County, Missouri - Stations: Kent - 9.33; Lenox - 17.27; Merle - 24.78; Conway - 27.63; Bedford - 35.20; Hopkins - 45.05; Pickering - 52.17; Maryville - 59.50.
- Line Segment No. 38 - Hastings (MP 0.00) to Randolph (MP 11.50), Mills and Fremont Counties, Iowa - Stations: Clark - 5.83; Randolph - 11.45.
- Line Segment No. 39 - Merle (MP 196.13) to Clearfield (MP 189.42), Taylor County, Iowa - Stations: Clearfield - 189.70.
- Line Segment No. 40 - Mediapolis (MP 15.51) to Washington (MP 52.64), Des Moines, Henry, Louisa and Washington Counties, Iowa - Stations: Roscoe - 20.55; Yarmouth - 24.93; Mt. Union - 28.35; Winfield - 33.97; Wyman - 36.6; Crawfordsville - 42.43; Washington - 52.50.
- Line Segment No. 41 - Albany Jct. (MP 65.75) to Grant City (MP 45.66), Gentry and Worth Counties, Missouri - Stations: Gentry - 57.45; Worth - 52.2; Grant City - 45.65.
- Line Segment No. 42 - Birmingham (MP 216.20) to Kearney (MP 199.07), Clay County, Missouri - Stations: Liberty - 210.5; Kearney - 200.3.
- Line Segment No. 43 - St. Joseph (MP 143.56) to Humeston (MP 16.92), including Giles to Lamoni, in Buchanan, Andrew, DeKalb and Harrison Counties, Missouri and Decatur and Wayne Counties, Iowa - Stations: End of line - 143.56; Helena - 125.7; Union Star - 119.66; King City - 112.68; Darlington - 99.16; Albany Junction - 96.88; Albany - 94.88; New Hampton - 86.75; Bethany - 77.85; Ridgeway - 67.5; Blythedale - 60.6; State Line - 52.5; Giles - 49.31; Davis City - 44.48; Leon - 36.97; Gardon Grove - 23.68; Humestown - 16.92; Lamoni - approximately 2 miles west of Giles.



Category 1 Lines

- Line Segment No. 44 - West Quincy (MP 1.90) to Kirksville (MP 69.30), Marion, Lewis, Knox, and Adair Counties, Missouri - Stations: Taylor - 6.55; Maywood - 10.8; Ewing - 18.12; Lewistown - 26.05; LaBelle - 31.8; Knox - 37.2; Edina - 46.6; Hurdland - 53.4; Brashear - 57.55; Kirksville Ag. Center - 67.7; Kirksville - 69.3.
- Line Segment No. 45 - Alexandria (MP 5.20), Clark, Scotland and Schulyer Counties, Missouri to Centerville (MP 89.60), Appanoose County, Iowa - Stations: Wayland - 12.4; Kahoka - 20.0; Medill - 23.3; Granger - 34.2; Arbela - 36.6; Memphis - 45.1; Downing - 56.35; Lancaster - 65.75; Glenwood Jct. - 69.0; State Line - 74.85; Centerville - 89.6.
- Line Segment No. 46 - Old Monroe (MP 51.60) to Mexico (MP 114.60), Lincoln, Warren, Montgomery and Audrain Counties, Missouri - Stations: Ethlyn - 56.25; Moscow - 61.3; South Troy - 65.5; Hawk Point - 72.9; Bellflower - 85.25; Buell - 90.6; Wellsville - 98.2; Haig - 109.6; Francis - 114.6; Mexico via Trackage Rights.
- Line Segment No. 47 - Laclede (MP 181.73) to Unionville (MP 128.30), Linn, Sullivan and Putnam Counties, Missouri - Stations: Linneus - 174.6; Purdin - 169.25; Browning - 162.43; Milan - 149.95; Unionville - 128.3.
- Line Segment No. 48 - Palouse (MP 76.00) to Grinnell (MP 70.81), Whitman County, Washington - Stations: Grinnell - 70.81.
- Line Segment No. 49 - Spokane (MP 69.80) to Fairfield (MP 131.21), Spokane County, Washington - Stations: Dishman and Spear.
- Line Segment No. 50 - Enumclaw (MP 9.69) to Cascade Junction (MP 17.02), King and Pierce Counties, Washington - Stations: Buckley - 12.8; Fitzer Bros. Spur - 14.1.
- Line Segment No. 51 - Adrian (MP 126.24) to Odair (MP 106.70), Grant County, Washington - Stations: Adco - 125.7; Bacon - 116.25.
- Line Segment No. 52 - Mt. Hope (MP 25.17) to Spring Valley (MP 39.96), Spokane County, Washington - Stations: West Fairfield - 31.0; Waverly - 34.1; Jefferson - 36.55; Spring Valley - 39.96.
- Line Segment No. 53 - Rosalia (MP 46.10) to Manning (MP 71.20), Whitman County, Washington - Stations: Balder - 50.6; Thornton - 55.44; Cashup - 59.65; Steptoe - 64.65; Manning - 71.12.

### Category 1 Lines

- Line Segment No. 54 - Spring Valley (MP 40.30) to Seabury (MP 47.75), Spokane and Whitman Counties, Washington - Stations: Fairbanks - 45.55; Seabury - 47.75.
- Line Segment No. 55 - Palouse (MP 76.00), Whitman County, Washington to Viola (MP 87.00) Latah County, Idaho - Stations: State Line - 3.9; Viola - 87.00.
- Line Segment No. 56 - Aloha (MP 96.36) to Moclips (MP 100.70), Grays Harbor County, Washington - Stations: Moclips - 100.4.
- Line Segment No. 57 - Clear Lake (MP 85.79) to Sedro Woolley (MP 83.05), Skagit County, Washington - Stations: Clear Lake - 83.3.
- Line Segment No. 58 - Spokane, Portland & Seattle Railway Company, Camp Clatsop (MP 108.55) to Seaside (MP 119.09), Clatsop County, Oregon - Stations: Bayview Transit - 116.1; Seaside - 118.95.
- Line Segment No. 59 - Oregon Electric Railway Company within Forest Grove (MP 10.27) to end of branch (MP 10.86) and within Hillsboro, Oregon, between MP 2.83 and 4.56, all in Washington County, Oregon - Stations: None.

### Category 3 Lines

- Line Segment No. 60 - L&S Junction (MP 11.02) to LaSalle (MP 25.51), LaSalle County, Illinois - Stations: Baileys Falls - 18.84; Dickinson - 20.02; Vroman - 21.01.
- Line Segment No. 61 - Nifa (MP 4.00) to West Batavia (MP 7.15) Kane County, Illinois - Stations: Mooseheart - 5.14; West Batavia - 7.15.
- Line Segment No. 62 - Rio (MP 210.27) to Alexis (MP 201.27), Knox and Warren Counties, Illinois - Stations: North Henderson - 206.22; Alexis - 201.54.
- Line Segment No. 63 - Cambon (MP 1.00) to West Frankfort (MP 4.99) Franklin County, Illinois - Stations: West Frankfort - 4.99.
- Line Segment No. 64 - Brinsmade (MP 97.48) to Leeds (MP 107.33) Benson County, North Dakota - Stations: Brinsmade - 97.48.



Category 3 Lines

Line Segment No. 65 - Minnekahta (MP 1.00) to Hot Springs (MP 12.91),  
Fall River County, South Dakota - Station: Hot Springs - 12.91.

Line Segment No. 66 - Vaughn (MP 0.10) to Augusta (MP 42.24),  
Carcade and Lewis and Clark Counties, Montana - Stations:  
Sun River 8.7; Fort Shaw 13.2; Simms 18.9; Lowry 22.8; Riebeling  
29.3; Augusta 42.3.

Line Segment No. 67 - Maryville (MP 59.80) to Barnard (MP 73.48),  
Nodaway County, Missouri - Stations: Barnard - 73.48.

Line Segment No. 68 - Crabtree (MP 61.10) to Oaksdale (MP 54.13),  
Whitman County, Washington - Stations: Solkulk 57.7; Crabtree 61.10.

Line Segment No. 69 - Eureka (MP 0.00) to Pleasant View (MP 19.73),  
Walla Walla County, Washington - Stations: Babcock 2.3; Lee 4.8;  
Elwood 7.8; Harvey 10.1; Clyde 11.6; Pickard 13.2; Reser 14.9;  
Tomkins 16.8; Pleasant View 19.9.

Line Segment No. 70 - Sterling (MP 232.00) to New Raymer (MP 266.50)  
Logan and Weld Counties, Colorado - Stations: Willard - 246.31;  
Stoneham - 256.46; New Raymer - 266.11.