

BNSF Railway Network Velocity & Service

STB Status Update: June 27, 2014

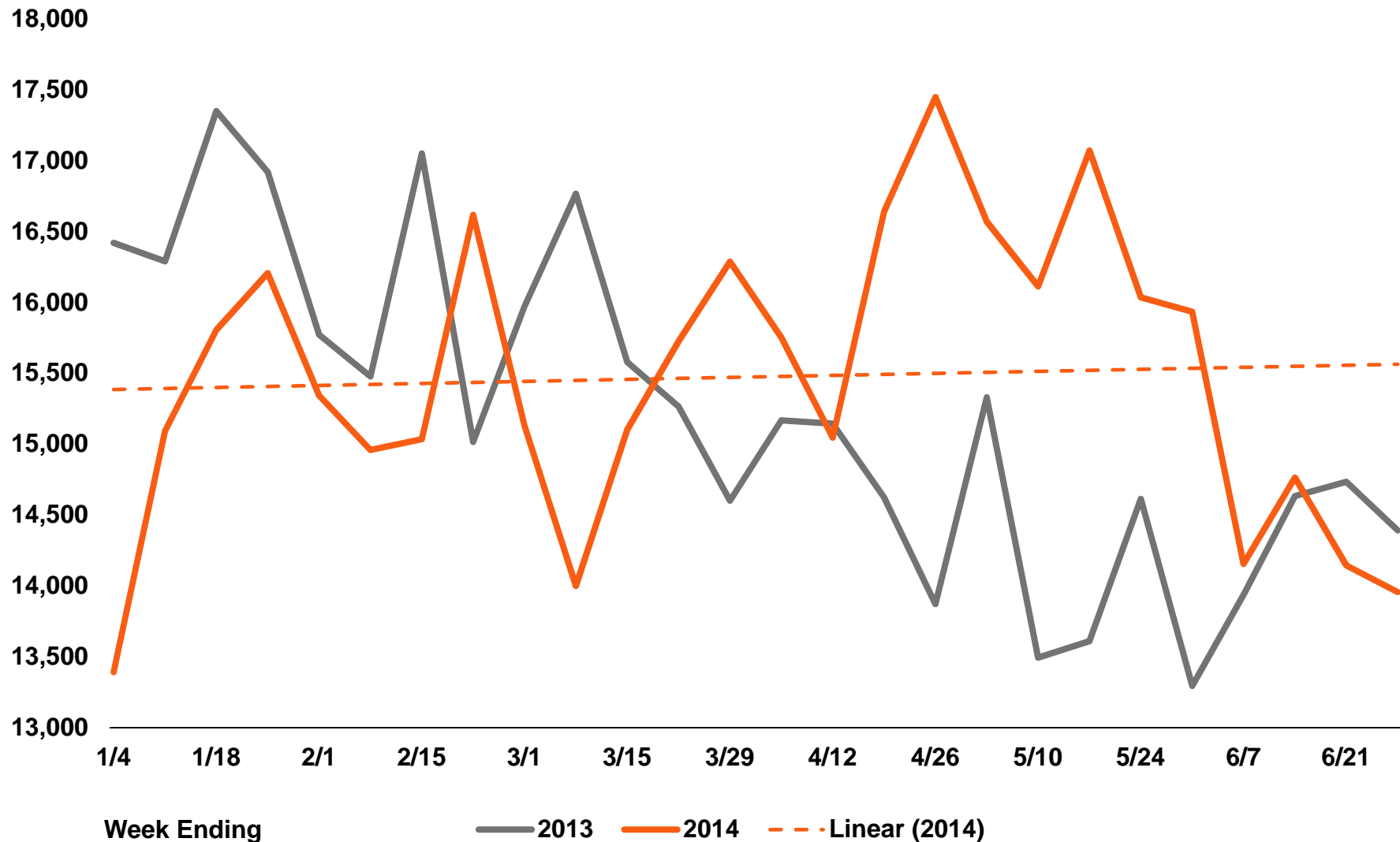


BNSF Dashboard Service Metrics

	Goal 6/27	Baseline 2/7	Actuals 6/27	Change from Goal
Past Due Cars				
# of Cars	5,022	9,982	9,599	↑ 91.1%
Avg Days Late	14.0	15.6	29.7	↑ 112.1%
	Goal Q2 2014	Baseline 2/1-2/7	Actuals QTD 6/27	Change from Baseline
Coal Avg Monthly Tons (in millions)	23.7	19.2	21.6	↑ 12.5%
IM System Transit Days	4.00	5.32	4.74	↓ 10.9%
AAR Terminal Dwell Hours	28.0	34.6	29.3	↓ 15.3%
AAR Train Speed	N/A	21.8	21.2	↓ 2.8%

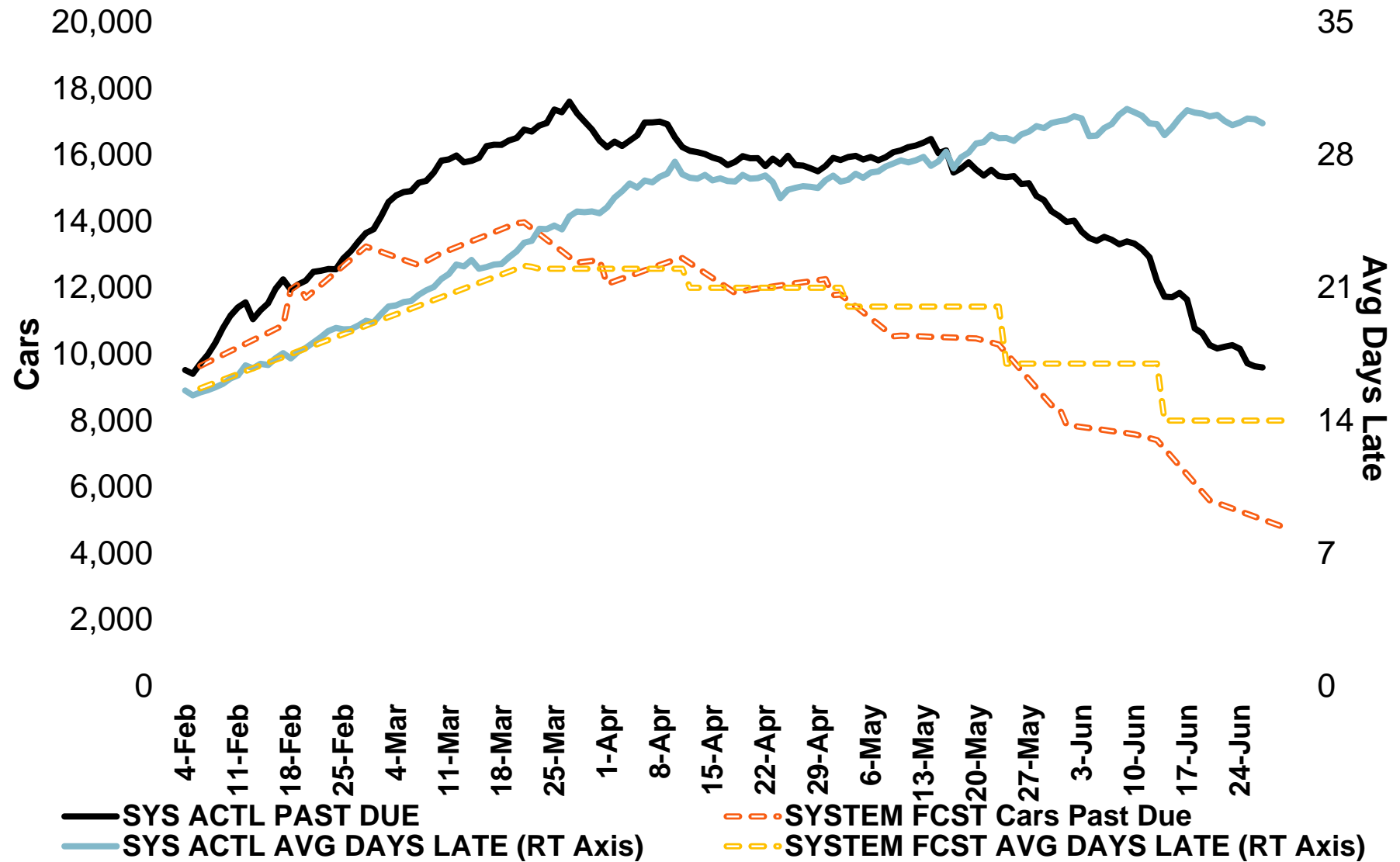


Ag Products Weekly Units 2014 vs 2013

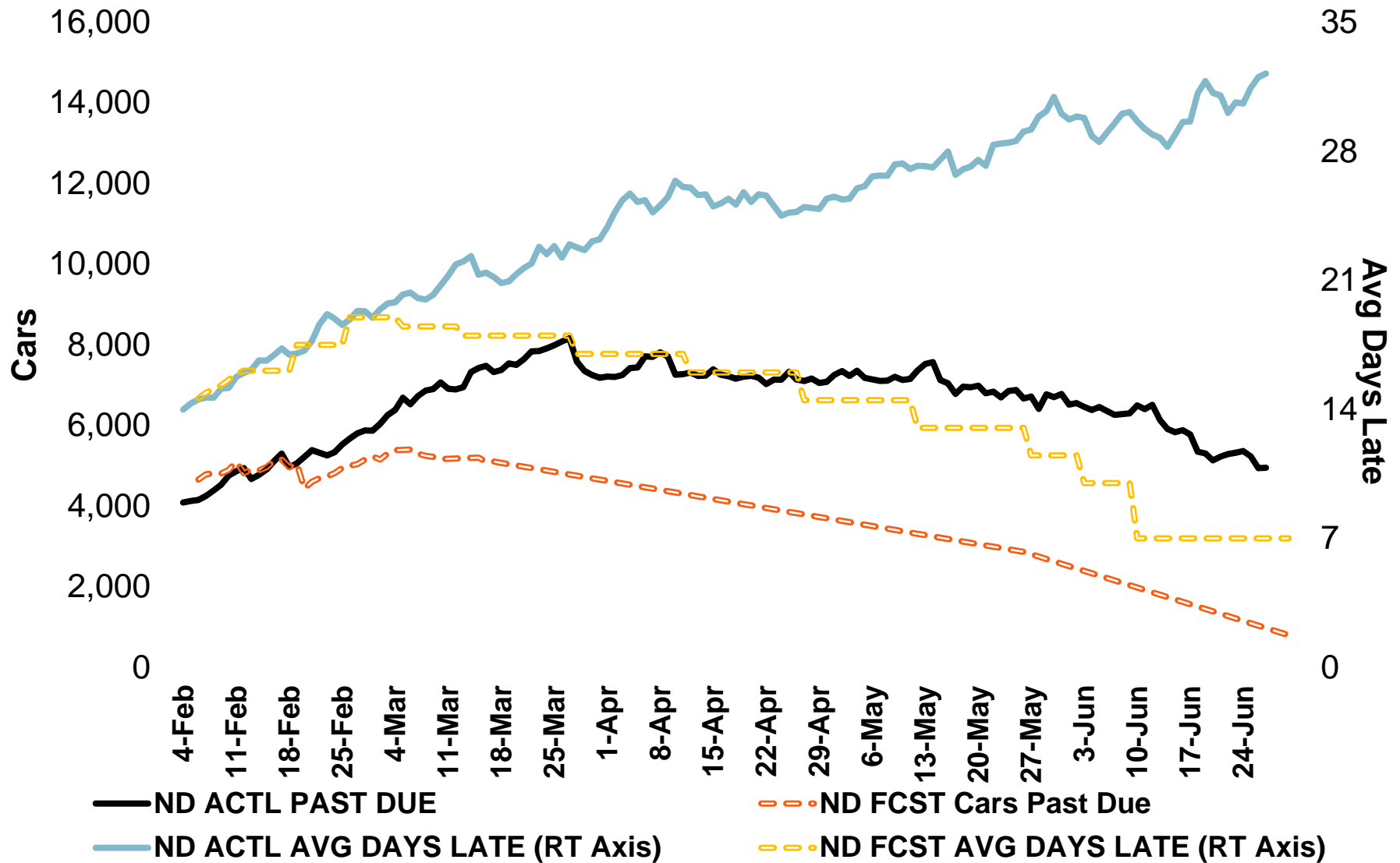


Data Source: AAR Units (excludes Fertilizer & Ethanol, includes Food Products)

System Ag Past Due Cars



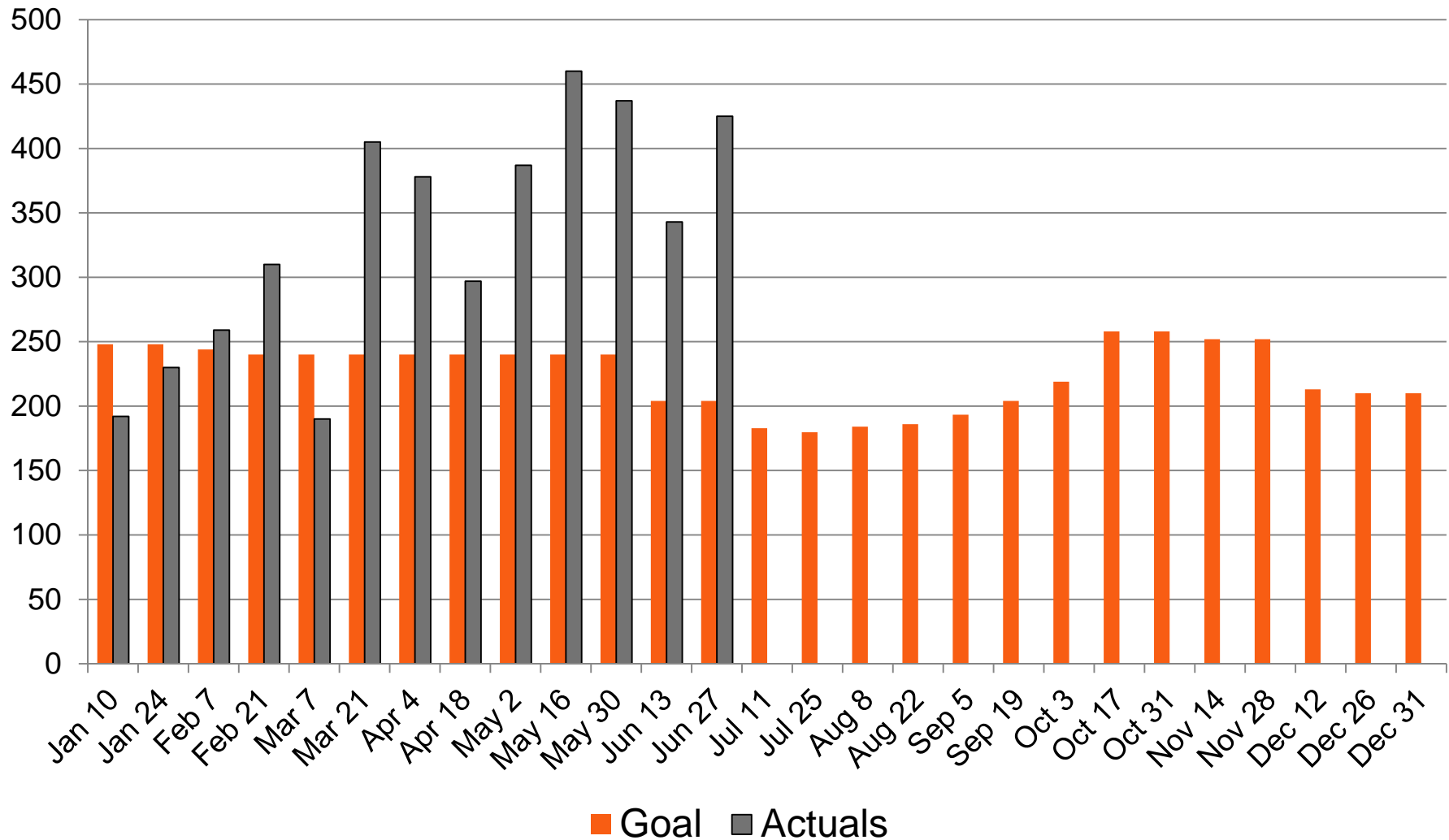
North Dakota Ag Past Due Cars



Data through June 27, 2014



Sugar Cars Spotted – North Dakota

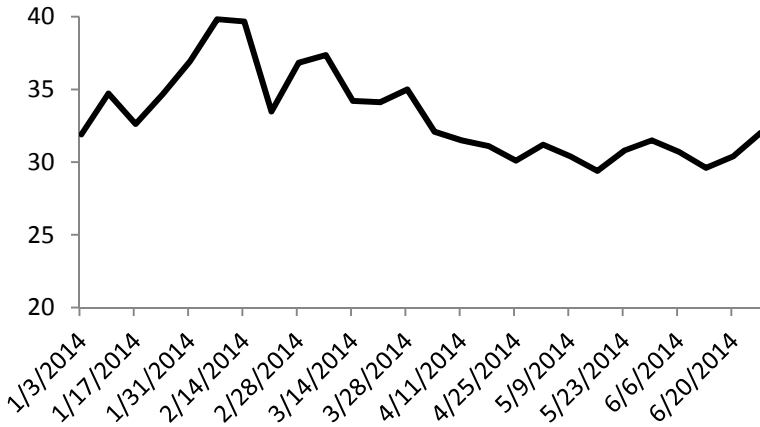


■ Goal ■ Actuals



North Region

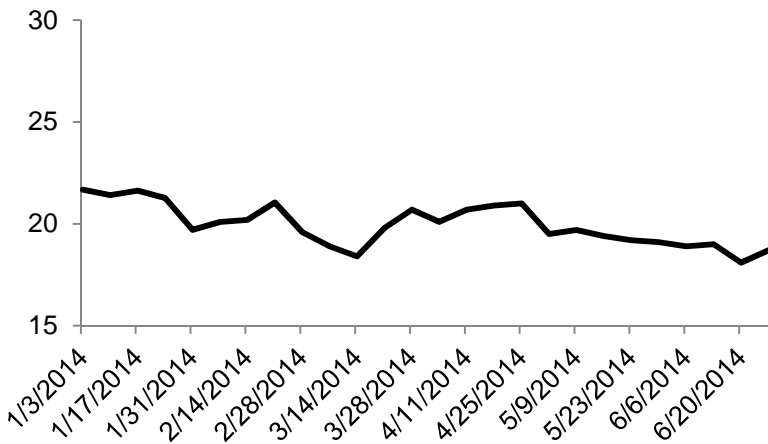
North Region AAR Dwell



AAR Dwell

Baseline 2/1-2/7	Actuals QTD 6/27	Change from Baseline
39.8	30.8	↓ 22.6%

North Region AAR Train Speed

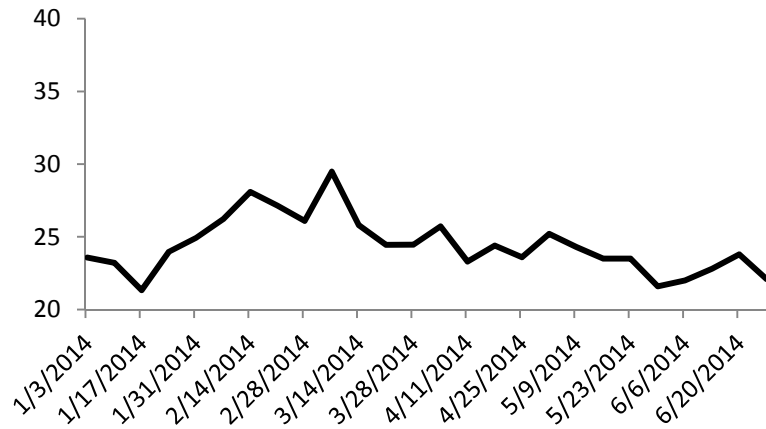


AAR Train Speed

Baseline 2/1-2/7	Actuals QTD 6/27	Change from Baseline
20.1	19.5	↓ 3.0%

Central Region

Central Region AAR Dwell



AAR Dwell

**Baseline
2/1-2/7**

26.2

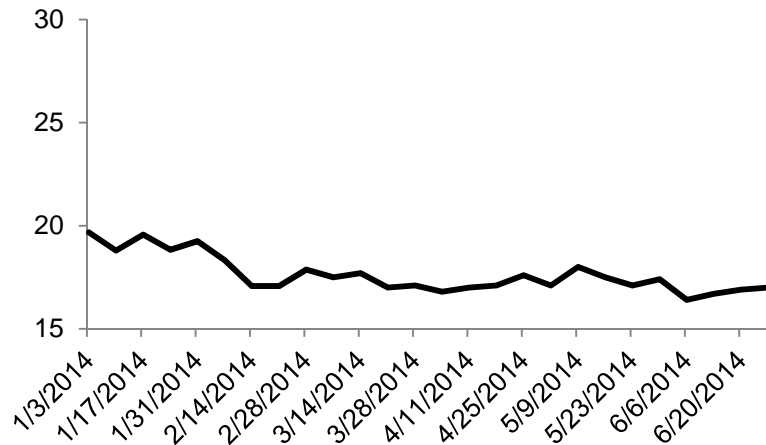
**Actuals
QTD 6/27**

23.4

**Change
from Baseline**

↓ 10.7%

Central Region AAR Train Speed



AAR Train Speed

**Baseline
2/1-2/7**

18.3

**Actuals
QTD 6/27**

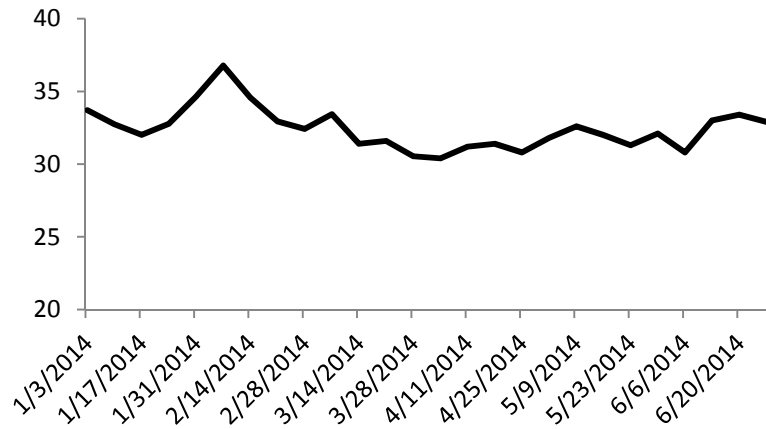
17.1

**Change
from Baseline**

↓ 6.6%

South Region

South Region AAR Dwell



AAR Dwell

**Baseline
2/1-2/7**

36.8

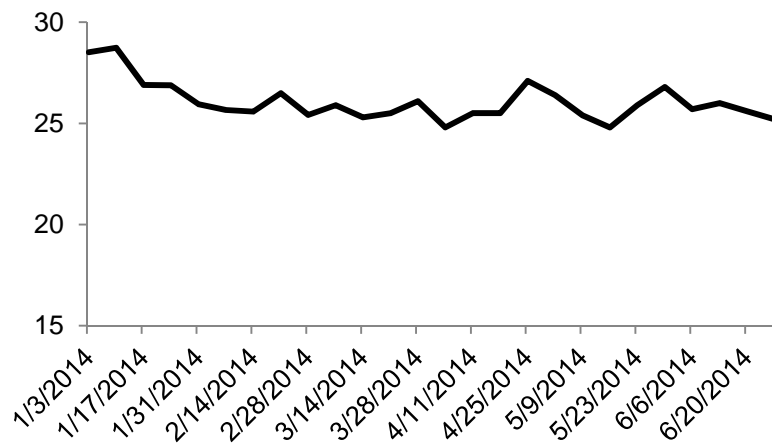
**Actuals
QTD 6/27**

31.9

**Change
from Baseline**

↓ 13.3%

South Region AAR Train Speed



AAR Train Speed

**Baseline
2/1-2/7**

25.7

**Actuals
QTD 6/27**

25.7

**Change
from Baseline**

↔ 0.0%

BNSF Long-Term Actions to Add Capacity

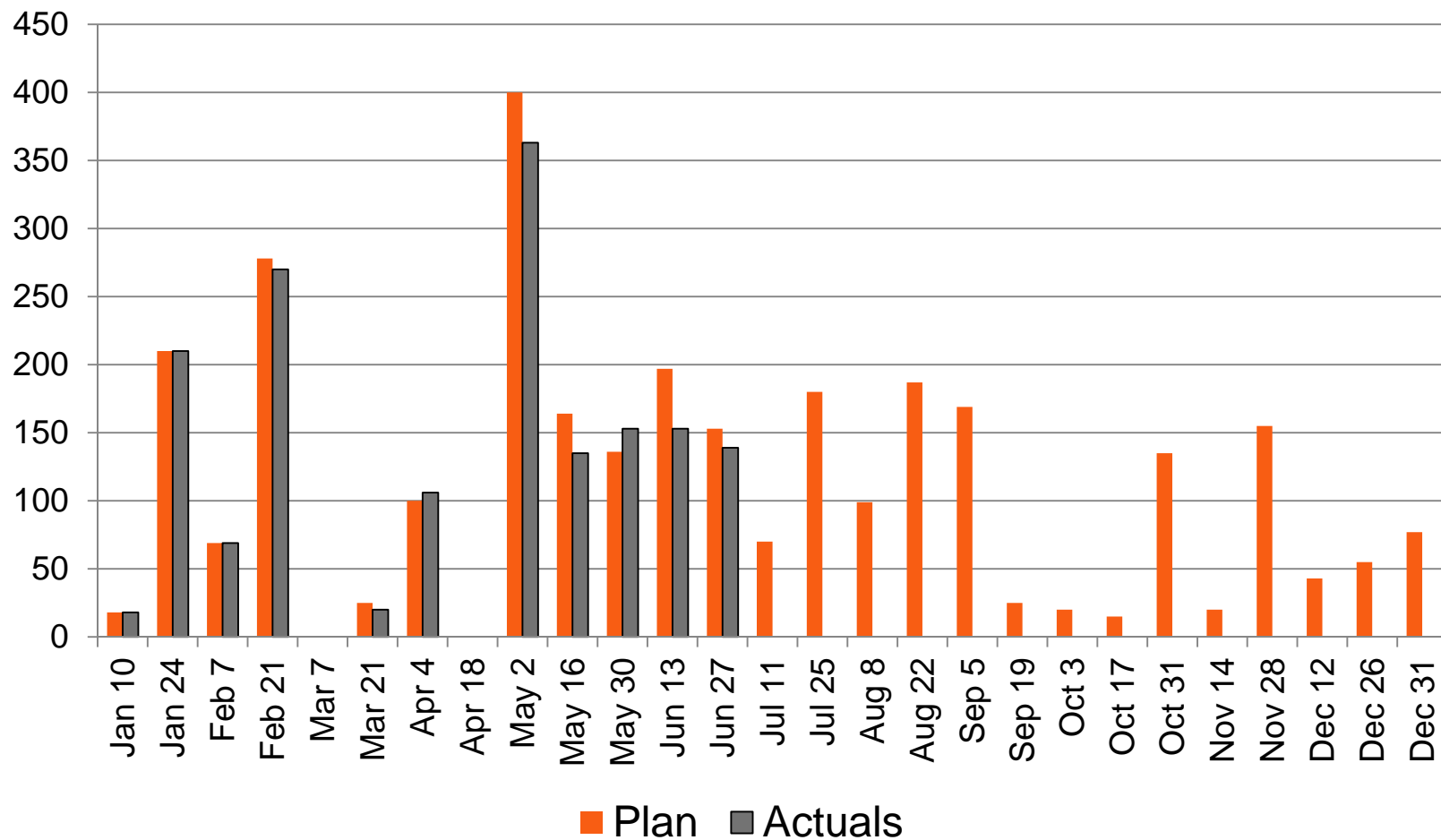
\$ Millions

	Annual Goal	YTD Q2 Goal	Prior Period (YTD 6/13)	Current Period (YTD 6/27)
People Hiring	3,000	1,750	1,497	1,636
TY&E	2,000	1,500	1,668	1,812
Eng & Mech				
Locomotive Acquisitions	500	237	214	245
Car – Acquisitions, Replacements & Extensions	5,000	1,750	785	1,987
Expansion Capital	\$ 900	\$ 360	\$ 261*	\$ 261*
Replacement & Maint Capital	\$ 2,300	\$ 1,090	\$ 896*	\$ 896*

* YTD 6/13 and YTD 6/27 represents YTD through May 2014.



System TYE Employees Hired & Trained

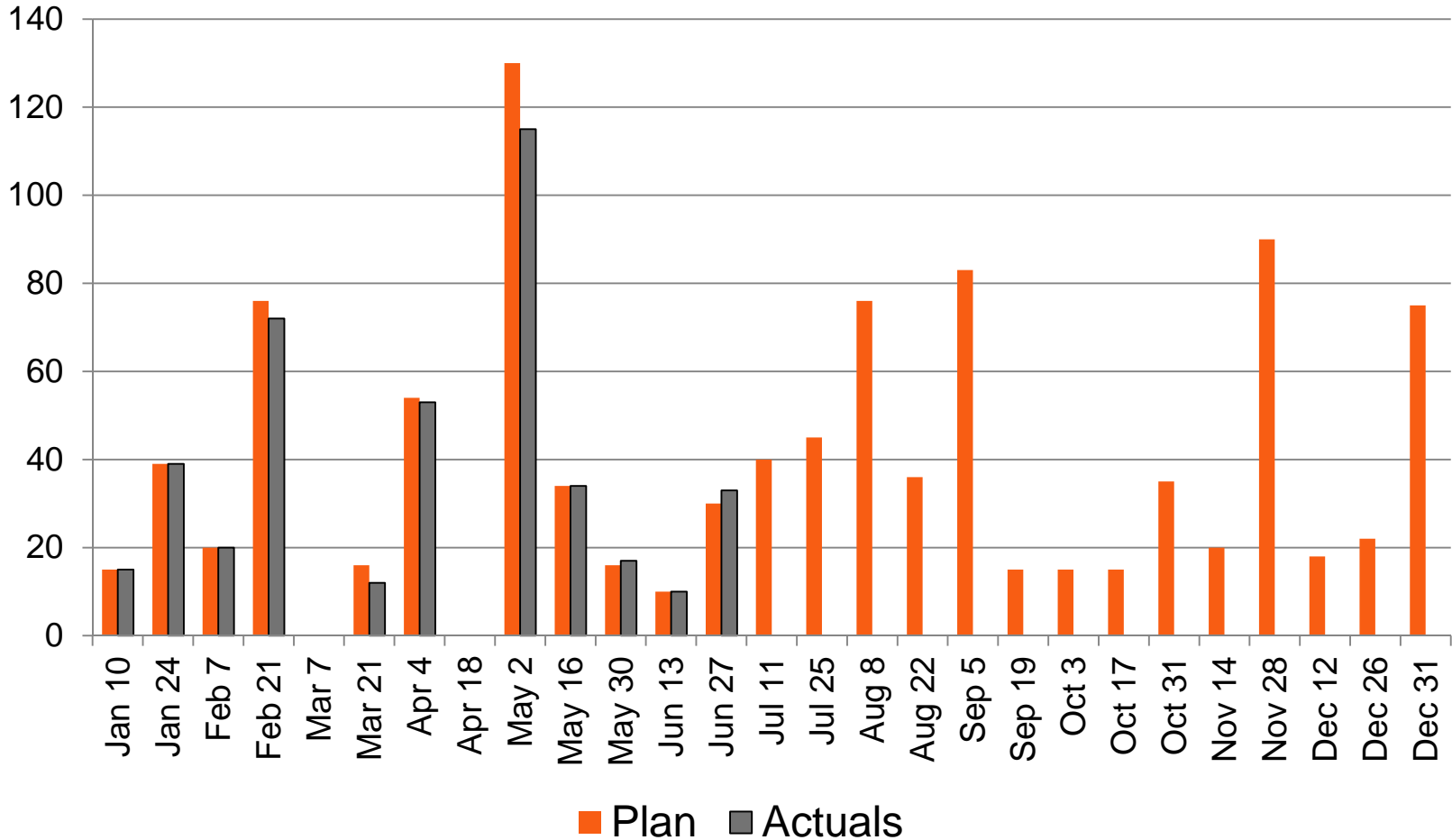


Cumulative	Jan	Feb	Mar	Apr	May	Jun *	Jul	Aug	Sep	Oct	Nov	Dec
Plan	297	575	650	1,100	1,400	1,750	2,000	2,450	2,500	2,650	2,825	3,000
Actual	297	567	692	1,055	1,344	1,636						

* Actual is YTD through 6/27/14, plan is YTD through 6/30/14.



North TYE Employees Hired & Trained



Cumulative	Jan	Feb	Mar	Apr	May	Jun *	Jul	Aug	Sep	Oct	Nov	Dec
Plan	74	150	220	350	400	470	525	720	750	800	910	1,025
Actual	74	146	211	325	377	420						

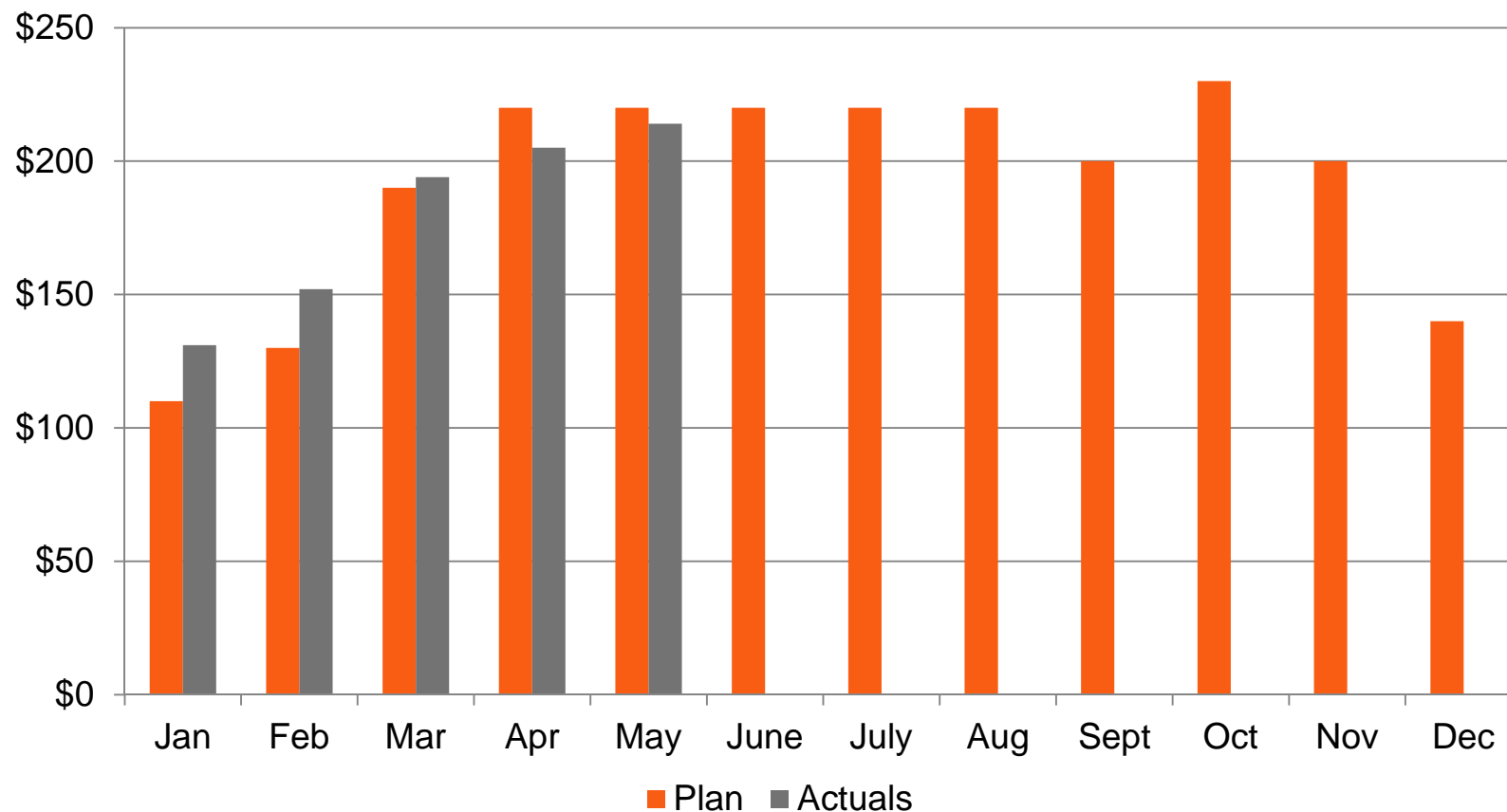
* Actual is YTD through 6/27/14, plan is YTD through 6/30/14.



System Capacity and Reliability

\$ Millions

Replacement & Maintenance Capital



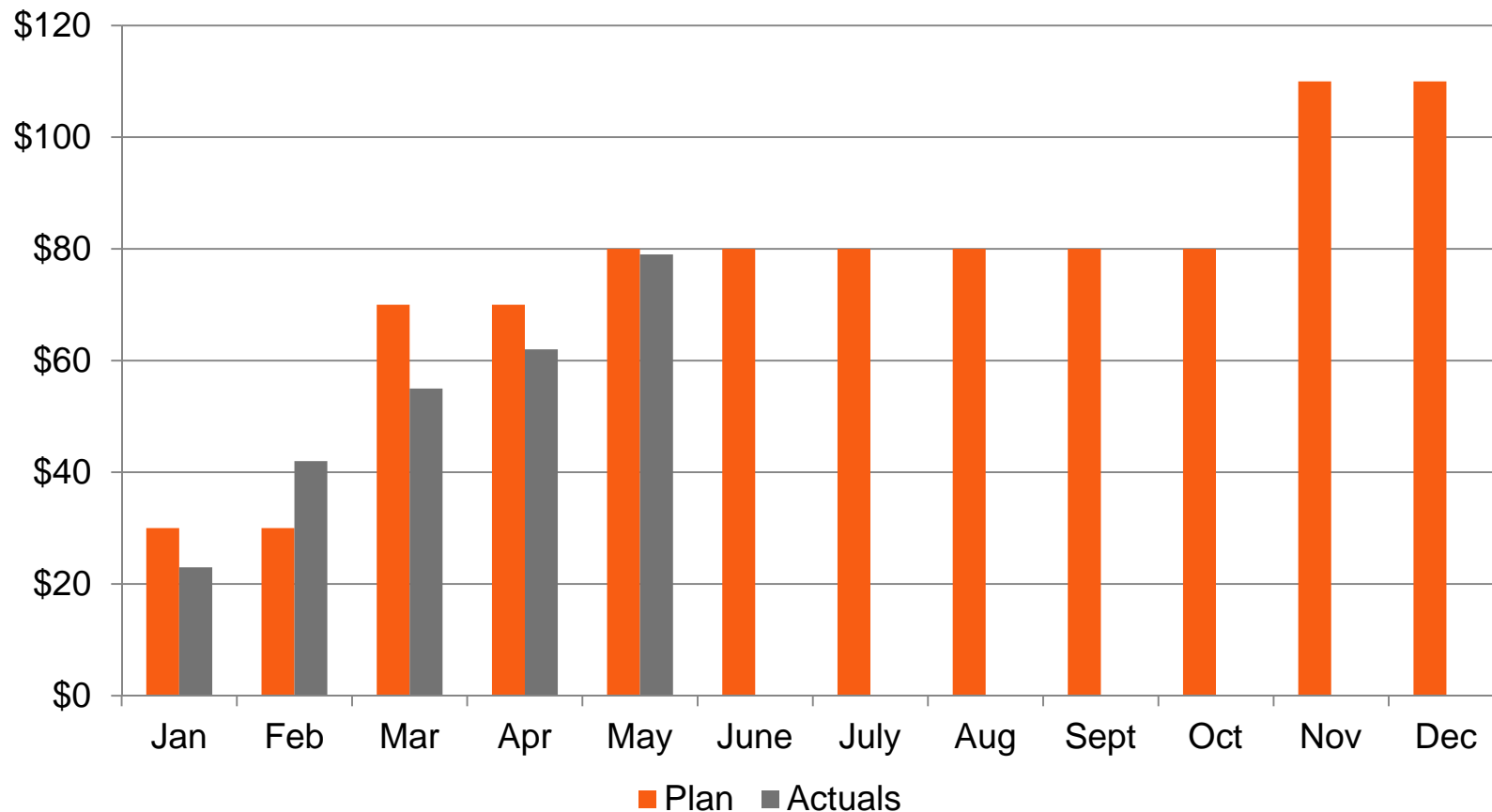
Cumulative	Jan	Feb	Mar	Apr	May	Jun	Jul	Aug	Sep	Oct	Nov	Dec
Plan	\$110	\$240	\$430	\$650	\$870	\$1,090	\$1,310	\$1,530	\$1,730	\$1,960	\$2,160	\$2,300
Actual	\$131	\$283	\$477	\$682	\$896							



System Capacity and Reliability

\$ Millions

Expansion & Efficiency Capital



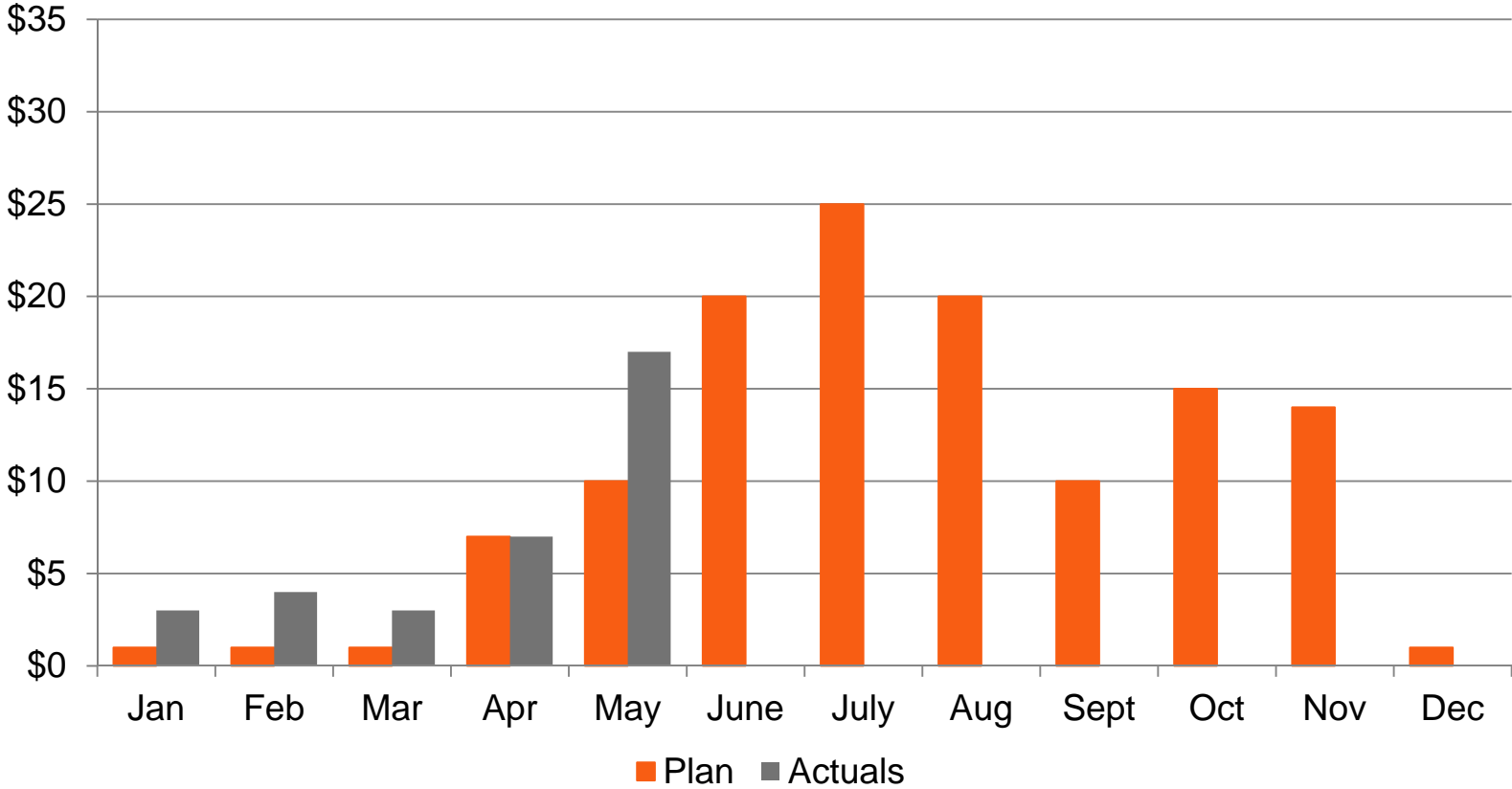
	Jan	Feb	Mar	Apr	May	Jun	Jul	Aug	Sep	Oct	Nov	Dec
Cumulative Plan	\$30	\$60	\$130	\$200	\$280	\$360	\$440	\$520	\$600	\$680	\$790	\$900
Actual	\$23	\$65	\$120	\$182	\$261							



North Dakota Capacity and Reliability

\$ Millions

Replacement & Maintenance Capital



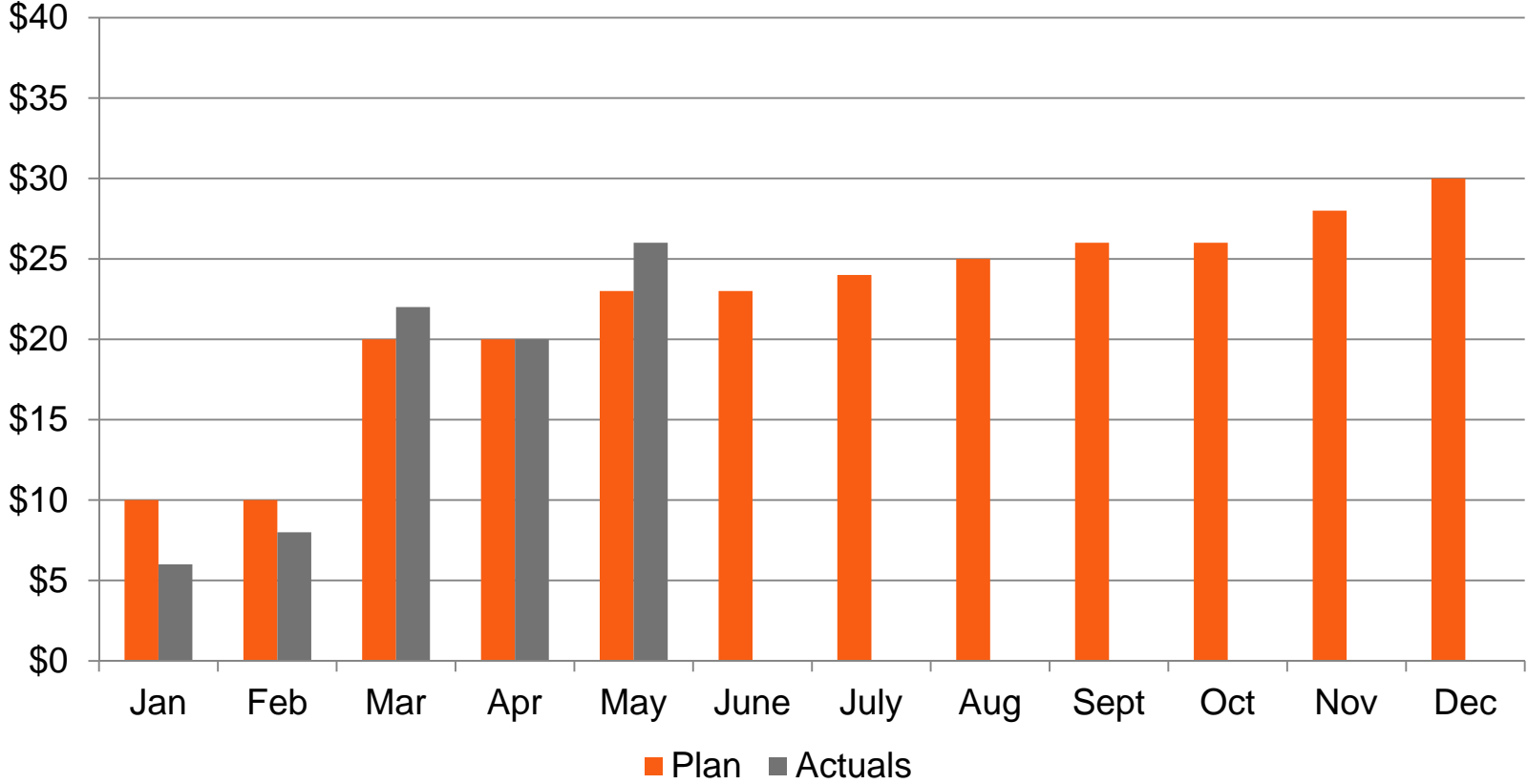
	Jan	Feb	Mar	Apr	May	Jun	Jul	Aug	Sep	Oct	Nov	Dec
Cumulative Plan	\$1	\$2	\$3	\$10	\$20	\$40	\$65	\$85	\$95	\$110	\$124	\$125
Actual	\$3	\$7	\$10	\$17	\$34							



North Dakota Capacity and Reliability

\$ Millions

Expansion & Efficiency Capital



	Jan	Feb	Mar	Apr	May	Jun	Jul	Aug	Sep	Oct	Nov	Dec
Cumulative Plan	\$10	\$20	\$40	\$60	\$83	\$106	\$130	\$155	\$181	\$207	\$235	\$265
Actual	\$6	\$14	\$36	\$56	\$82							

