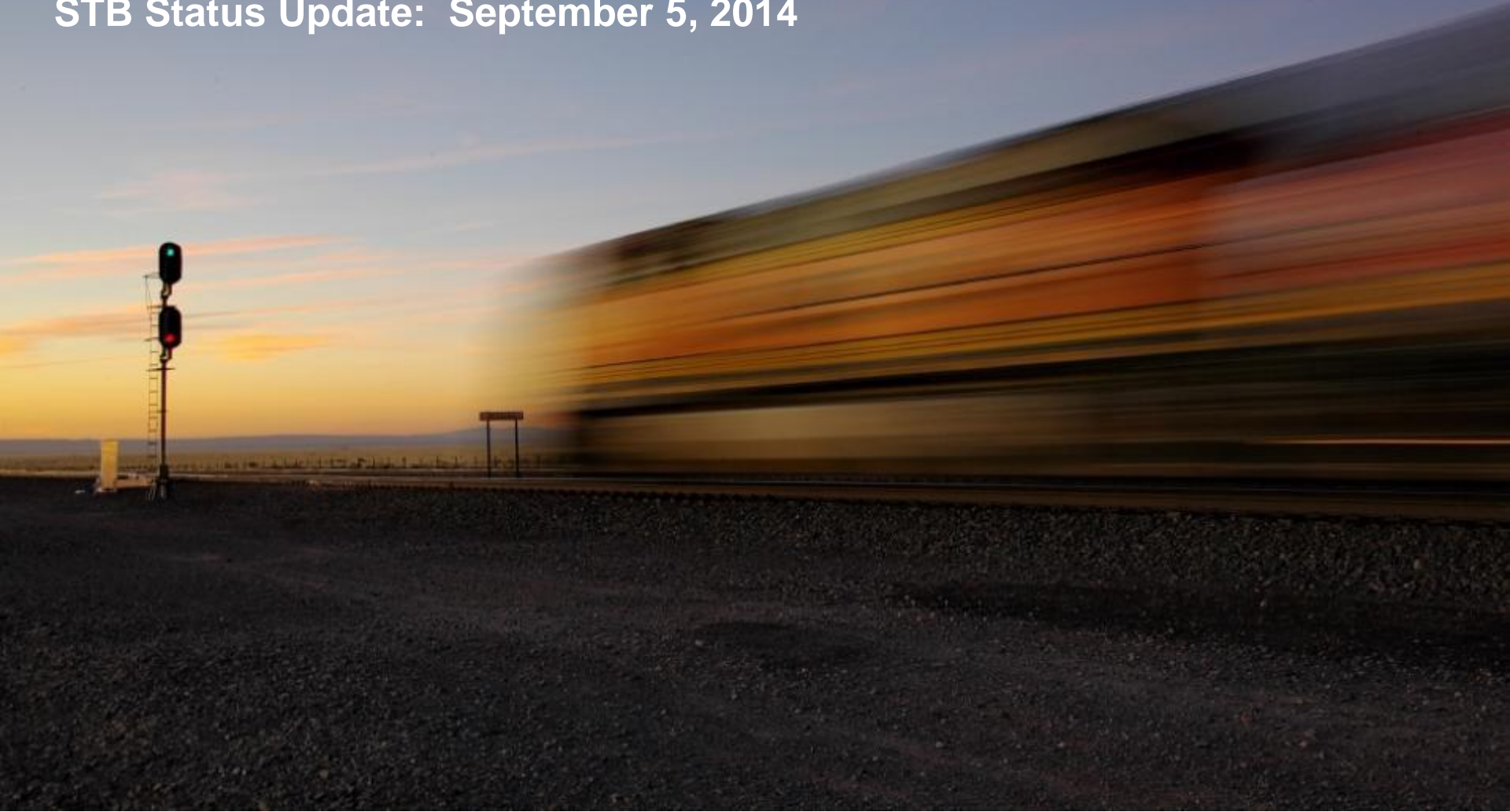


BNSF Railway Network Velocity & Service

STB Status Update: September 5, 2014

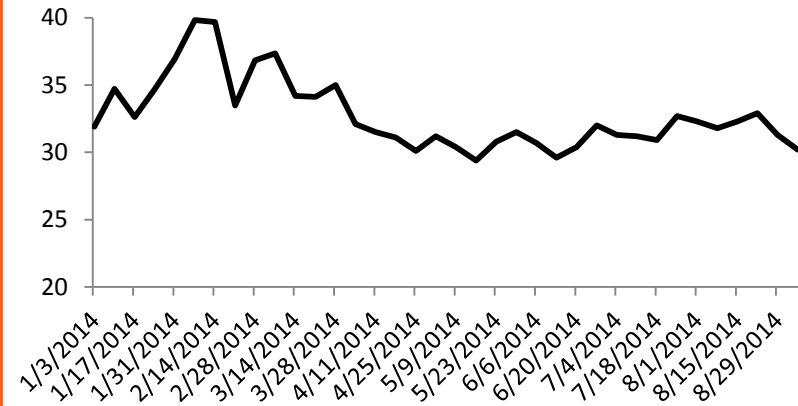


BNSF Dashboard Service Metrics

	Goal Q3 2014	Baseline 2/1-2/7	Actuals QTD 9/5	Change from Baseline
Coal Avg Monthly Tons (in millions)	24.9	19.2	22.0	↑ 14.6%
IM System Transit Days	4.00	5.32	4.68	↓ 12.0%
AAR Terminal Dwell Hours	27.6	34.6	29.4	↓ 15.0%
AAR Train Speed	N/A	21.8	21.1	↓ 3.2%

North Region

North Region AAR Dwell



AAR Dwell

Baseline
2/1-2/7

39.8

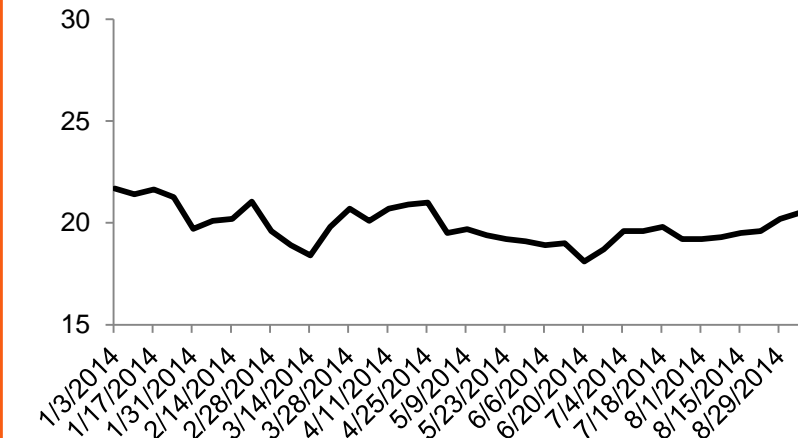
Actuals
QTD 9/5

31.7

Change
from Baseline

↓ 20.4%

North Region AAR Train Speed



AAR Train Speed

Baseline
2/1-2/7

20.1

Actuals
QTD 9/5

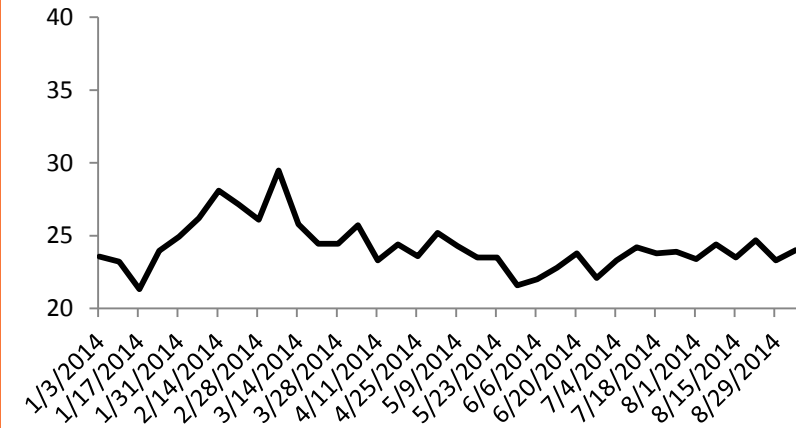
19.7

Change
from Baseline

↓ 2.0%

Central Region

Central Region AAR Dwell



AAR Dwell

Baseline
2/1-2/7

26.2

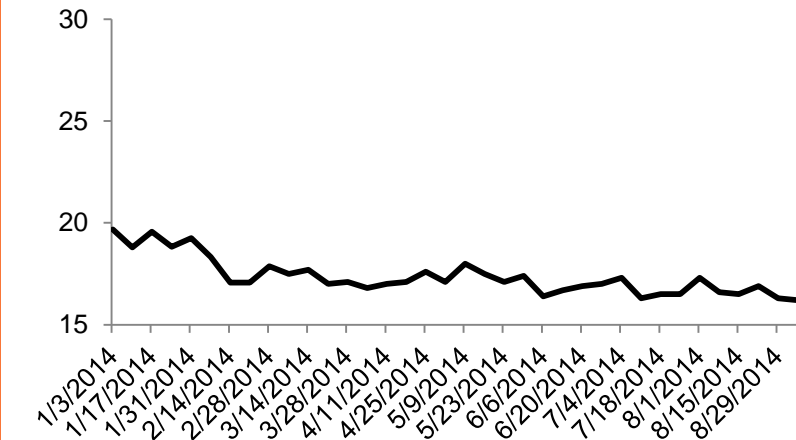
Actuals
QTD 9/5

23.9

Change
from Baseline

↓ 8.8%

Central Region AAR Train Speed



AAR Train Speed

Baseline
2/1-2/7

18.3

Actuals
QTD 9/5

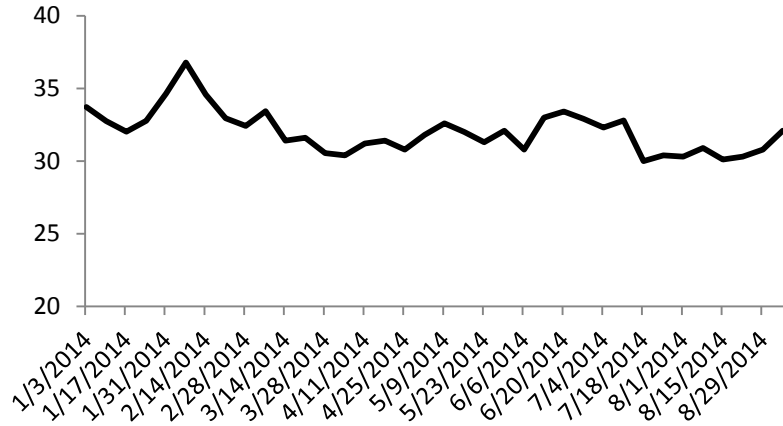
16.6

Change
from Baseline

↓ 9.3%

South Region

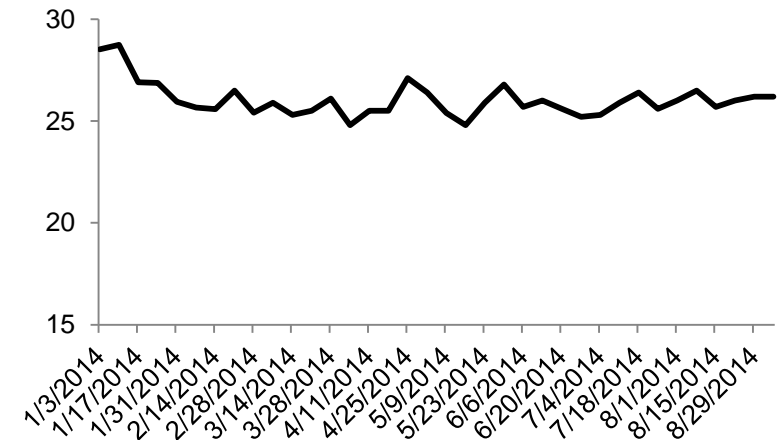
South Region AAR Dwell



AAR Dwell

	Baseline 2/1-2/7	Actuals QTD 9/5	Change from Baseline
AAR Dwell	36.8	31.0	↓ 15.8%

South Region AAR Train Speed



AAR Train Speed

	Baseline 2/1-2/7	Actuals QTD 9/5	Change from Baseline
AAR Train Speed	25.7	26.0	↑ 1.2%

BNSF Long-Term Actions to Add Capacity

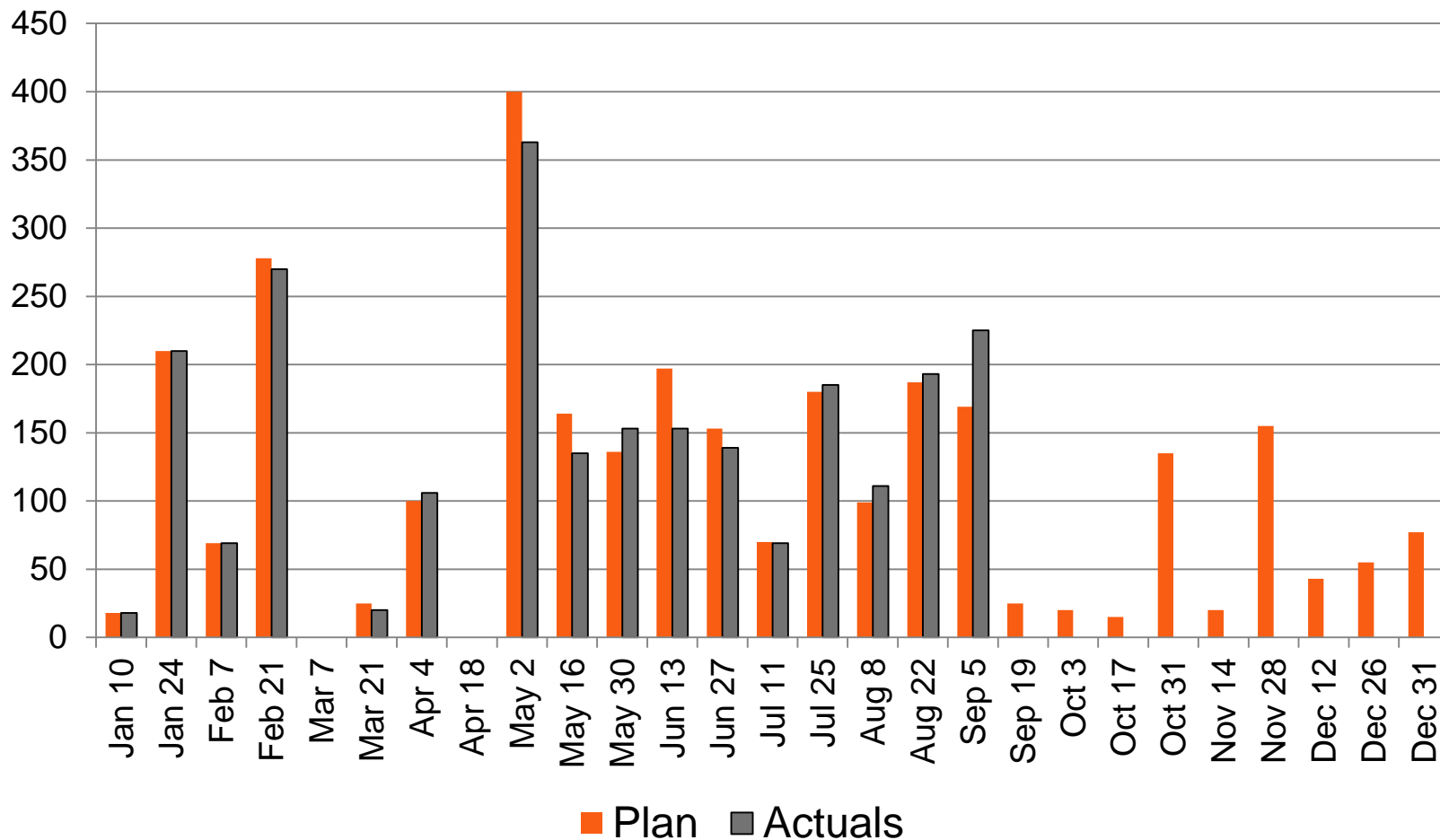
\$ Millions

	Annual Goal	YTD Q3 Goal	Prior Period (YTD 8/22)	Current Period (YTD 9/5)
People Hiring				
TY&E	3,000	2,500	2,194	2,419
Eng & Mech	2,000	1,950	2,269	2,313
Locomotive Acquisitions	500	389	326	346
Car – Acquisitions, Replacements & Extensions	5,000	1,995	2,113	2,113
Expansion Capital	\$ 900	\$ 600	\$ 419*	\$ 546*
Replacement & Maint Capital	\$ 2,300	\$ 1,730	\$ 1,351*	\$ 1,617*



*YTD 8/22 represents YTD through July 2014. YTD 9/5 represents YTD through August 2014.

System TYE Employees Hired & Trained



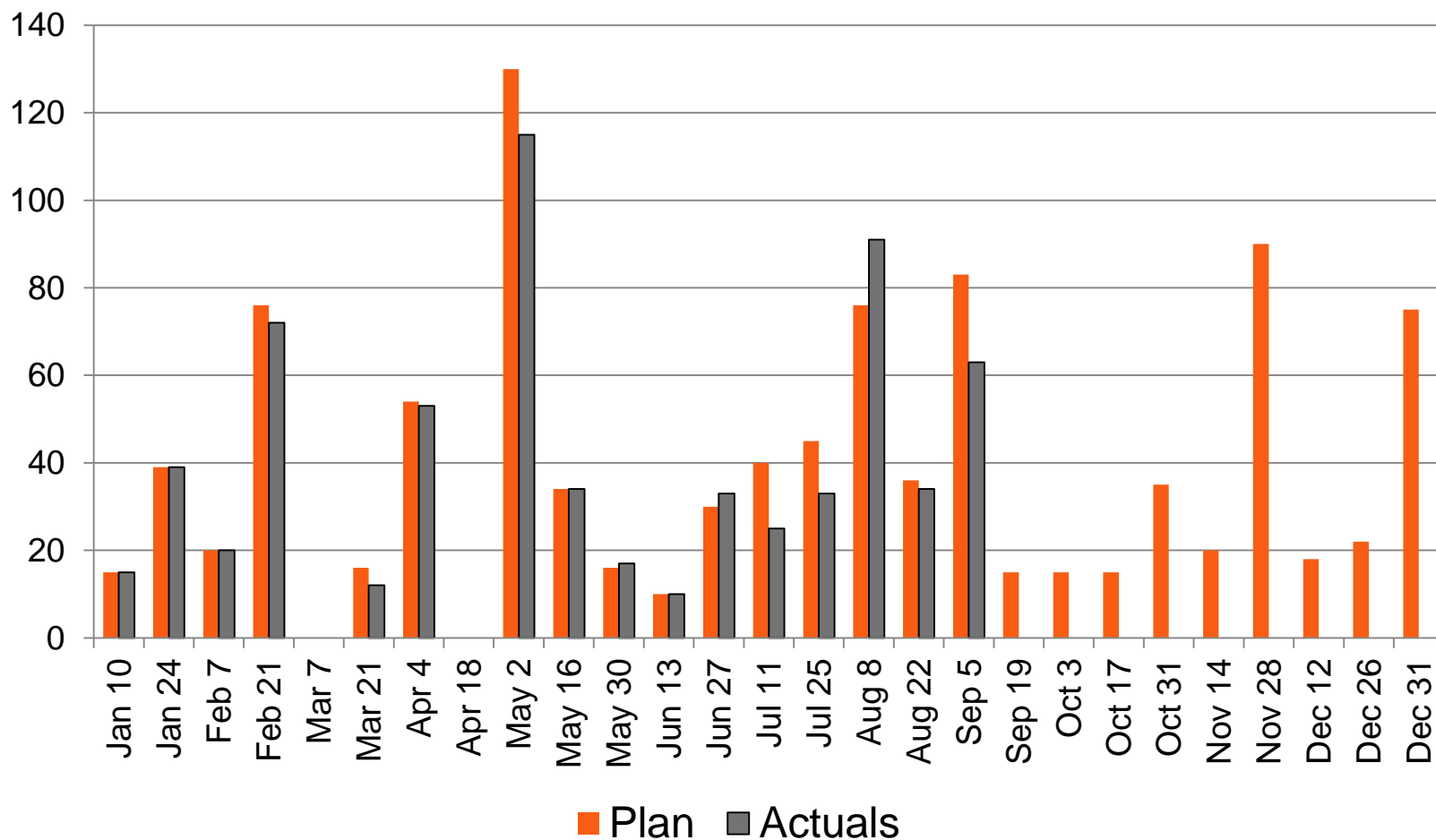
Cumulative	Jan	Feb	Mar	Apr	May	Jun	Jul	Aug*	Sep**	Oct	Nov	Dec
Plan	297	575	650	1,100	1,400	1,750	2,000	2,450	2,500	2,650	2,825	3,000
Actual	297	567	692	1,055	1,344	1,695	1,911	2,419	2,419			

* All of the hiring that happened in the two week period ending September 5th occurred in August.

** Actual is YTD through 9/5/14, plan is YTD through 9/30/14.



North TYE Employees Hired & Trained



Cumulative	Jan	Feb	Mar	Apr	May	Jun	Jul	Aug*	Sep**	Oct	Nov	Dec
Plan	74	150	220	350	400	470	525	720	750	800	910	1,025
Actual	74	146	211	325	377	435	479	666	666			

* All of the hiring that happened in the two week period ending September 5th occurred in August.

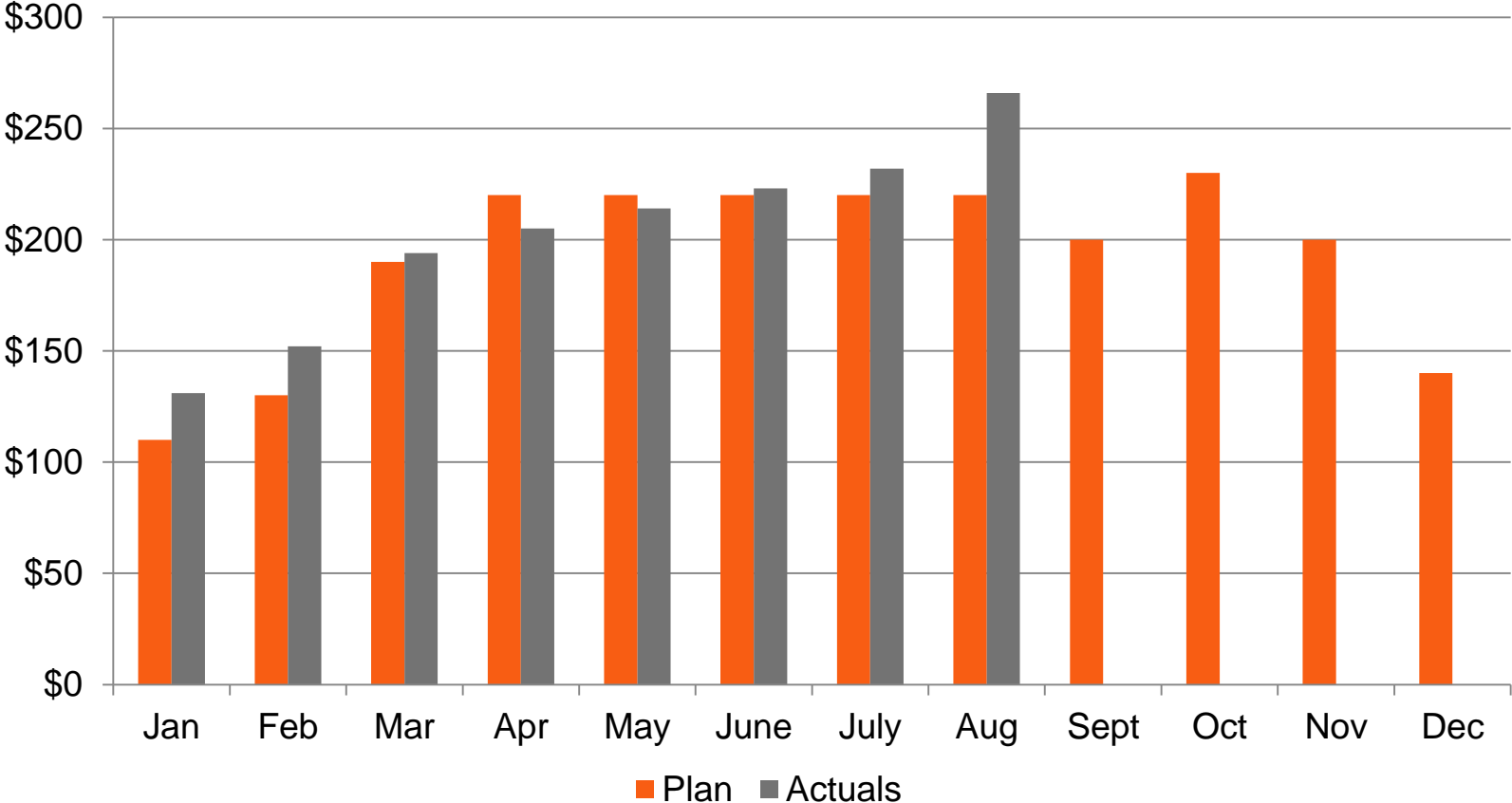
** Actual is YTD through 9/5/14, plan is YTD through 9/30/14.



System Capacity and Reliability

\$ Millions

Replacement & Maintenance Capital



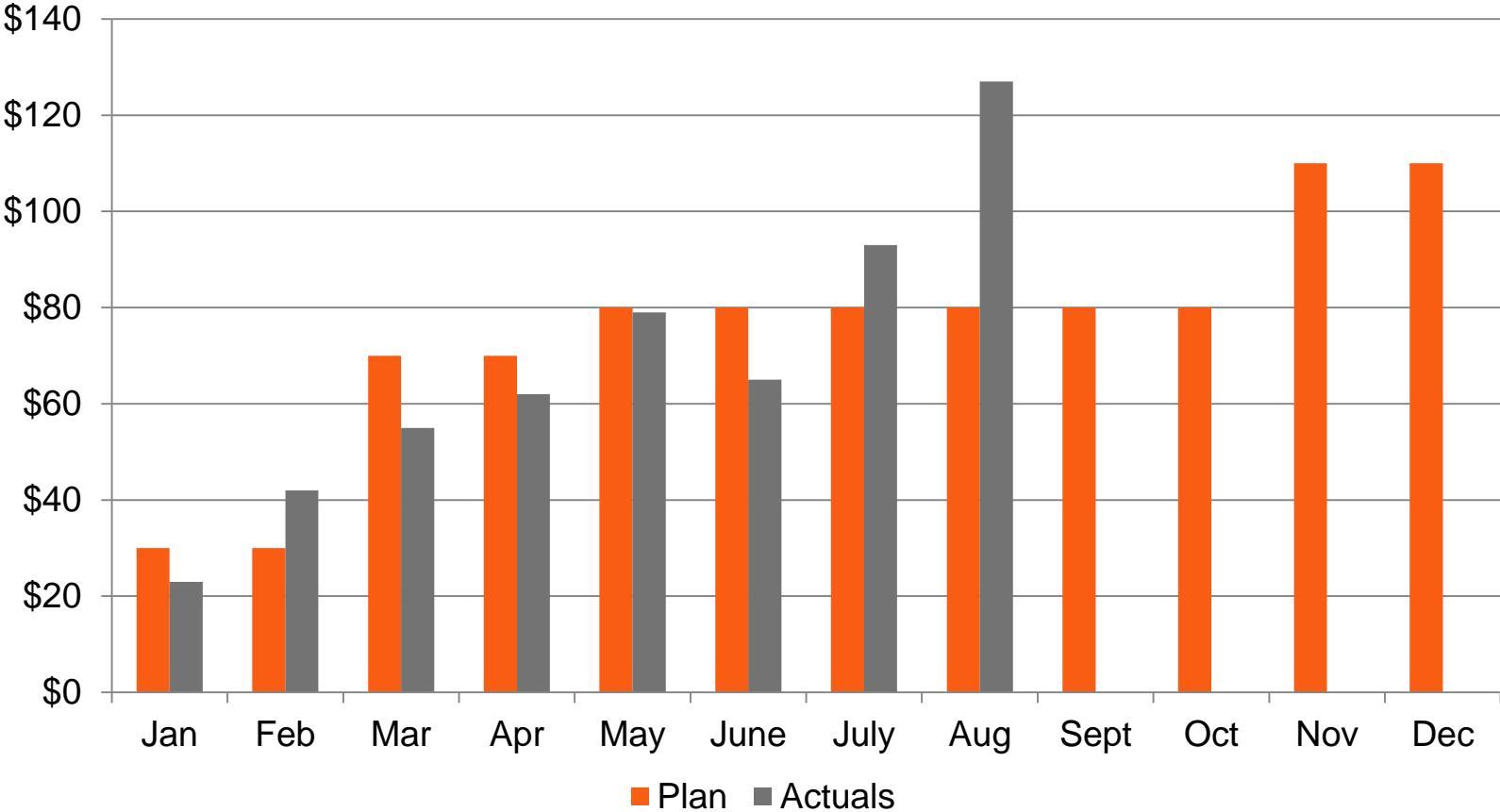
Cumulative	Jan	Feb	Mar	Apr	May	Jun	Jul	Aug	Sep	Oct	Nov	Dec
Plan	\$110	\$240	\$430	\$650	\$870	\$1,090	\$1,310	\$1,530	\$1,730	\$1,960	\$2,160	\$2,300
Actual	\$131	\$283	\$477	\$682	\$896	\$1,119	\$1,351	\$1,617				



System Capacity and Reliability

\$ Millions

Expansion & Efficiency Capital



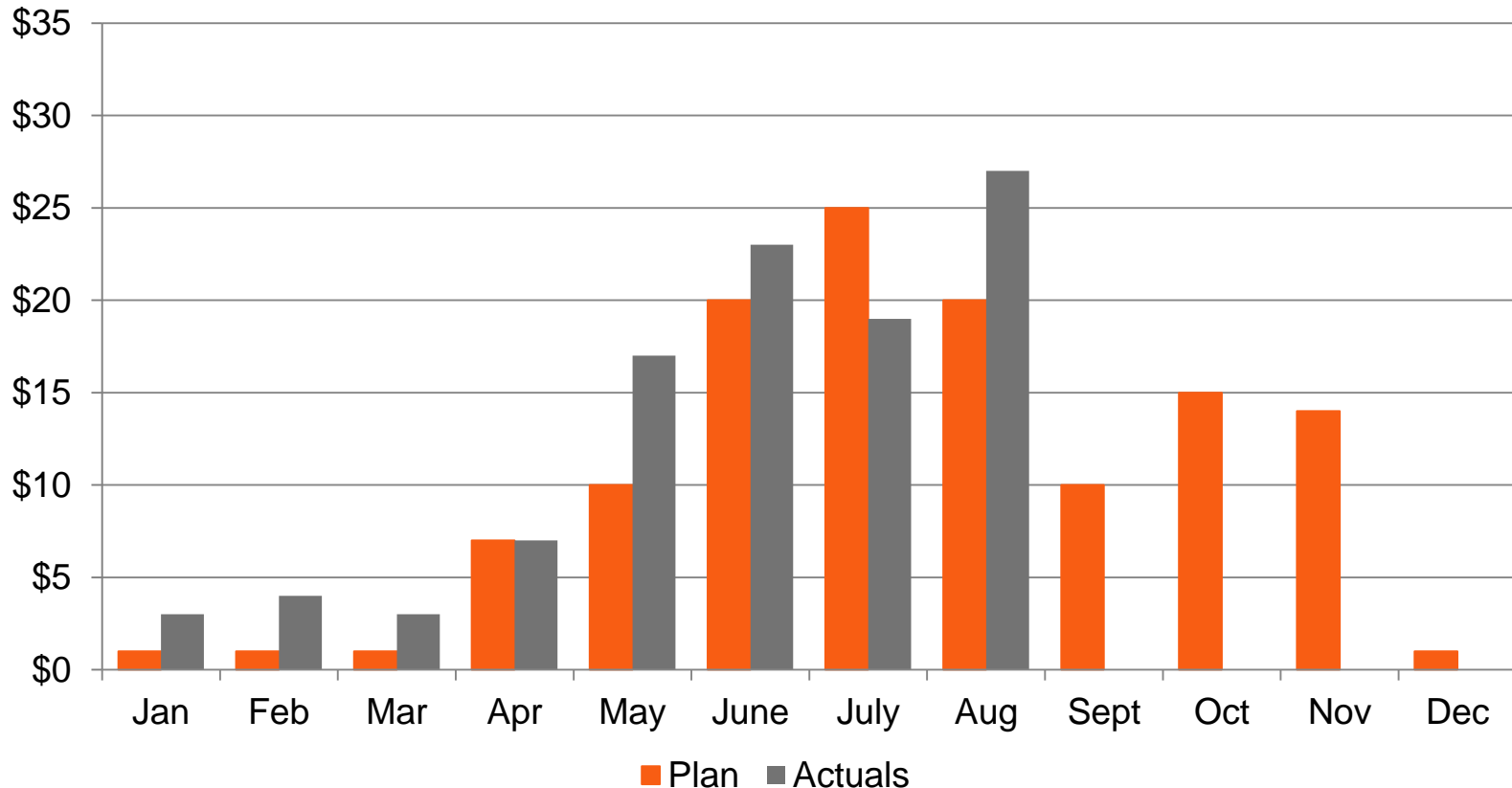
Cumulative	Jan	Feb	Mar	Apr	May	Jun	Jul	Aug	Sep	Oct	Nov	Dec
Plan	\$30	\$60	\$130	\$200	\$280	\$360	\$440	\$520	\$600	\$680	\$790	\$900
Actual	\$23	\$65	\$120	\$182	\$261	\$326	\$419	\$546				



North Dakota Capacity and Reliability

\$ Millions

Replacement & Maintenance Capital



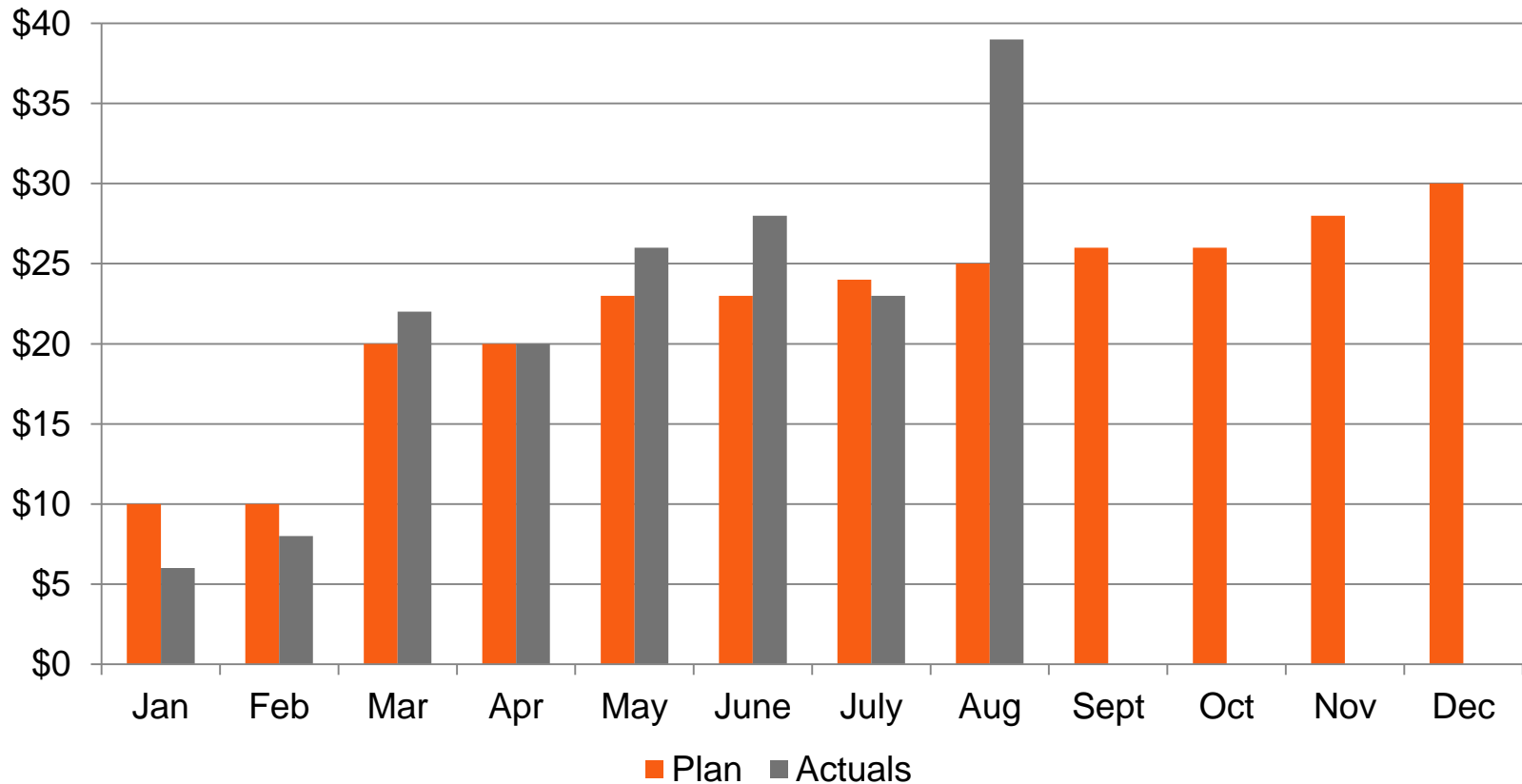
Cumulative	Jan	Feb	Mar	Apr	May	Jun	Jul	Aug	Sep	Oct	Nov	Dec
Plan	\$1	\$2	\$3	\$10	\$20	\$40	\$65	\$85	\$95	\$110	\$124	\$125
Actual	\$3	\$7	\$10	\$17	\$34	\$57	\$76	\$103				



North Dakota Capacity and Reliability

\$ Millions

Expansion & Efficiency Capital



	Jan	Feb	Mar	Apr	May	Jun	Jul	Aug	Sep	Oct	Nov	Dec
Cumulative Plan	\$10	\$20	\$40	\$60	\$83	\$106	\$130	\$155	\$181	\$207	\$235	\$265
Actual	\$6	\$14	\$36	\$56	\$82	\$110	\$133	\$172				

